



## E2F1 Antibody

E305022b

**Product description:**

Formulation: Lyophilized E2F1 antibody purified by protein affinity column containing 1% BSA and 0.02% NaN<sub>3</sub>

Catalog No.: E305022b

Size: 100ug/200ul

**Source:**

Rabbit polyclonal E2F1<sup>(1)</sup> antibody was raised against a recombinant human E2F1 protein 183-433aa (NM\_005225).

**Species Reactivity:**

Reacts with: Human

Predicted: mus, rat

Not yet tested in other species.

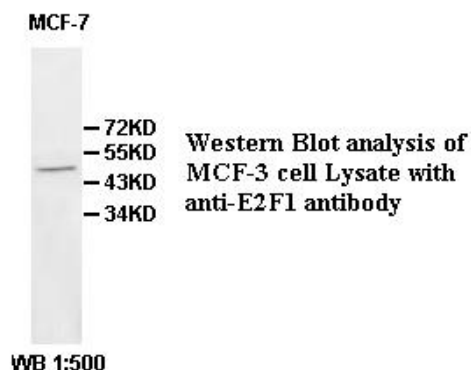
**Application:**

For research use only

ELISA titer: 1:20,000-1:80,000

Western blot analysis: 1:500-1:1,000

Optimal dilutions/concentrations should be determined by the end user.

**Dilution instruction and storage:**

Already reconstituted in 200ul sterile H<sub>2</sub>O. The antibody is stable for at least one year when stored at -20°C after reconstitution.

Avoid repeated freeze/thaw cycles.

**Reference:**

(1) Xu, H.G., Ren, W., Zou, L., et al. Direct repression of the human IRF-3 promoter by E2F1. Immunogenetics 63 (4), 189-196 (2011)

**For Research Use Only**