



## Chk1 Antibody

E305029

**Product description:**

Formulation: Lyophilized Chk1 antibody purified by protein A column containing 0.02%  $\text{NaN}_3$   
Catalog No.: E305029  
Size: 100ug/200ul

**Source:**

Rabbit polyclonal Chk1<sup>(1)</sup> antibody was raised against a recombinate human Chk1 protein (NM\_001114121).

**Species Reactivity:**

Reacts with: Human  
Predicted: mus, rat  
Not yet tested in other species.

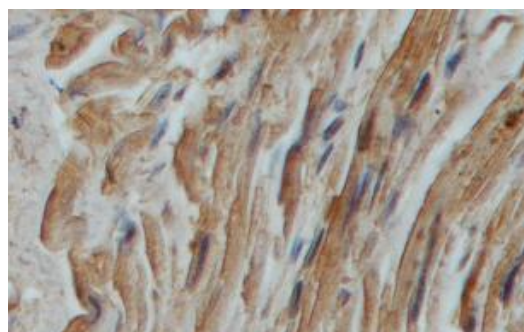
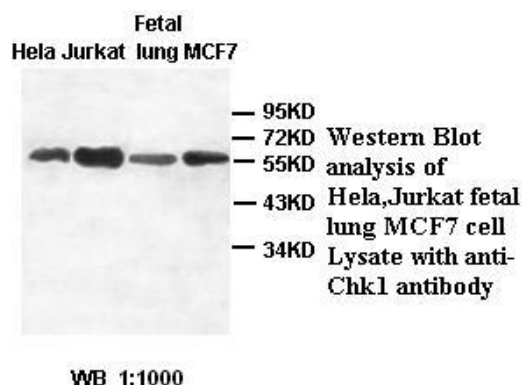
**Application:**

For research use only  
ELISA titer: 1:20,000-1:80,000  
Western blot analysis: 1:500-1:1,000  
Immunohistochemistry: 1:100-500  
Optimal dilutions/concentrations should be determined by the end user.

**Dilution instruction and storage:**

Already reconstituted in 200ul sterile  $\text{H}_2\text{O}$ . The antibody is stable for at least one year when stored at  $-20^\circ\text{C}$  after reconstitution.

Avoid repeated freeze/thaw cycles.



Immunohistochemical staining of formalin-fixed paraffin-embedded fetal heart showing Cytoplasmic and Nuclear staining with anti-Chk1 antibody at a dilution of 1/100.

**Reference:**

(1) Liu, Y., Fang, Y., Shao, H., Lindsey-Boltz, L., et al. Interactions of human mismatch repair proteins MutSalpha and MutLalpha with proteins of the ATR-Chk1 pathway. J. Biol. Chem. 285 (8), 5974-5982 (2010)

**For Research Use Only**