



## EGFR Antibody

**E305035****Product description:**

Formulation: Lyophilized EGFR antibody purified by protein A column containing 0.02% NaN<sub>3</sub>

Catalog No.: E305035

Size: 100ug/200ul

**Source:**

Rabbit polyclonal EGFR<sup>(1)</sup> antibody was raised against a recombinate human EGFR protein 115-319aa (NM\_005228).

**Species Reactivity:**

Reacts with: Human

Predicted: mus, rat

Not yet tested in other species.

**Application:**

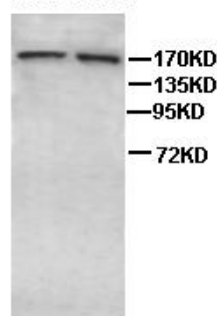
For research use only

ELISA titer: 1:20,000-1:80,000

Western blot analysis: 1:500-1:1,000

Optimal dilutions/concentrations should be determined by the end user.

Hela SKOV3



Western Blot analysis  
of Hela and SKOV3  
cell Lysate with anti-  
EGFR antibody

WB 1:500

**Dilution instruction and storage:**

Already reconstituted in 200ul sterile H<sub>2</sub>O. The antibody is stable for at least one year when stored at -20°C after reconstitution.

Avoid repeated freeze/thaw cycles.

**Reference:**

(1) Perez, C.A., Chen, H., Shyr, Y.,. The EGFR polymorphism rs884419 is associated with freedom from recurrence in patients with resected prostate cancer. J. Urol. 183 (5), 2062-2069 (2010)

**For Research Use Only**