



## ZCCHC4 Antibody

**E305159****Product description:**

Formulation: Lyophilized ZCCHC4 antibody purified by protein A column containing 0.02% NaN<sub>3</sub>

Catalog No.: E305159

Size: 100ug/200ul

**Source:**

Rabbit polyclonal ZCCHC4 <sup>(1)</sup> antibody was raised against a recombinate human ZCCHC4 protein 9-205aa (BC016914).

**Species Reactivity:**

Reacts with: Human

Predicted: mus, rat

Not yet tested in other species.

**Application:**

For research use only

ELISA titer: 1:20,000-1:80,000

Western blot analysis: 1:500-1:1,000

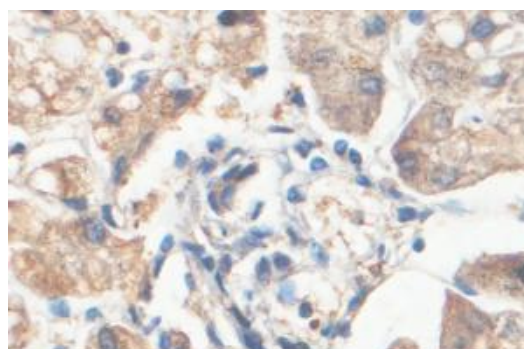
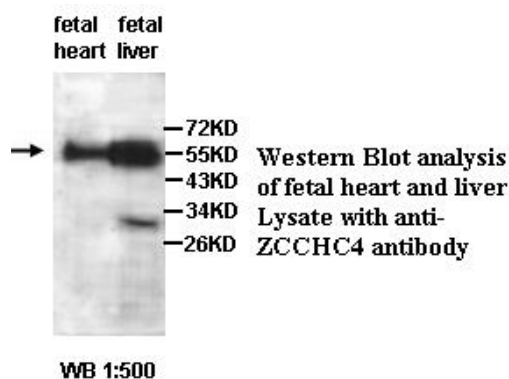
Immunohistochemistry: 1:100-500

Optimal dilutions/concentrations should be determined by the end user.

**Dilution instruction and storage:**

Already reconstituted in 200ul sterile H<sub>2</sub>O. The antibody is stable for at least one year when stored at -20°C after reconstitution.

Avoid repeated freeze/thaw cycles.



Immunohistochemical staining of formalin-fixed paraffin-embedded fetal liver staining with anti-ZCCHC4 antibody at a dilution of 1/100.

**Reference:**

(1) Olsen, J.V., Blagoev, B., Gnani, F., et al. Global, in vivo, and site-specific phosphorylation dynamics in signaling networks. Cell 127 (3), 635-648 (2006)

**For Research Use Only**