



## MCAM Antibody

**E305262****Product description:**

Formulation: Lyophilized MCAM antibody purified by protein affinity column containing 0.02% NaN<sub>3</sub>

Catalog No.: E305262

Size: 100ug/200ul

**Source:**

Rabbit polyclonal MCAM <sup>(1)</sup> antibody was raised against a recombinant human MCAM protein 259-544aa (BC056418).

**Species Reactivity:**

Reacts with: Human

Predicted: mus, rat

Not yet tested in other species.

**Application:**

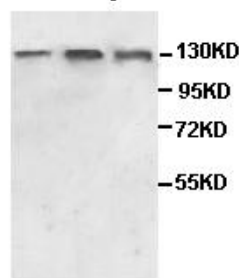
For research use only

ELISA titer: 1:20,000-1:80,000

Western blot analysis: 1:500-1:1,000

Optimal dilutions/concentrations should be determined by the end user.

fetal fetal Hela  
heart kidney



WB 1:500

Western Blot analysis  
of fetal heart,kidney  
and Hela cell Lysate  
with anti-MCAM  
antibody

**Dilution instruction and storage:**

Already reconstituted in 200ul sterile H<sub>2</sub>O.

The antibody is stable for at least one year when stored at -20°C after reconstitution

Avoid repeated freeze/thaw cycles.

**Reference:**

(1) Sato,A., Torii,I., Okamura,Y., et al. Immunocytochemistry of CD146 is useful to discriminate between malignant pleural mesothelioma and reactive mesothelium. Mod. Pathol. 23 (11), 1458-1466 (2010)

**For Research Use Only**