



CDH1 Antibody

E305266

Product description:

Formulation: Lyophilized CDH1 antibody purified by protein A column containing 0.02% NaN₃

Catalog No.: E305266

Size: 100ug/200ul

Source:

Rabbit polyclonal CDH1⁽¹⁾ antibody was raised against a recombinant human CDH1 protein 265-459aa (BC141838).

Species Reactivity:

Reacts with: Human

Predicted: mus, rat

Not yet tested in other species.

Application:

For research use only

ELISA titer: 1:20,000-1:80,000

Western blot analysis: 1:500-1:1,000

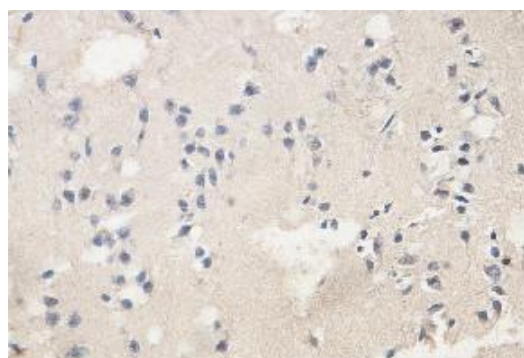
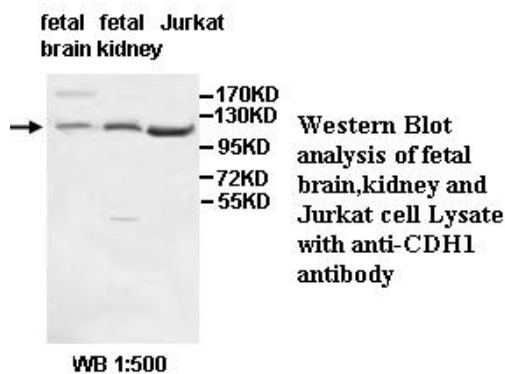
Immunohistochemistry: 1:100-1:500

Optimal dilutions/concentrations should be determined by the end use

Dilution instruction and storage:

Already reconstituted in 200ul sterile H₂O. The antibody is stable for at least one year when stored at -20°C after reconstitution.

Avoid repeated freeze/thaw cycles.



Immunohistochemical staining of formalin-fixed paraffin-embedded fetal brain showing membrane staining with anti-CDH1 antibody at a dilution of 1/100.

Reference:

(1) Schrader, K.A., Masciari, S., Boyd, N., et al. Germline mutations in CDH1 are infrequent in women with early-onset or familial lobular breast cancers. J. Med. Genet. 48 (1), 64-68 (2011)

For Research Use Only