



SCFD1 Antibody

E305351

Product description:

Formulation: Lyophilized SCFD1 antibody purified by protein affinity column containing 0.02% NaN₃

Catalog No.: E305351

Size: 100ug/200ul

Source:

Rabbit polyclonal SCFD1 ⁽¹⁾ antibody was raised against a recombinant human SCFD1 protein 267-519aa (BC017734).

Species Reactivity:

Reacts with: Human

Predicted: mus, rat

Not yet tested in other species.

Application:

For research use only

ELISA titer: 1:20,000-1:80,000

Western blot analysis: 1:500-1:1,000

Immunohistochemistry: 1:100-1:500

Optimal dilutions/concentrations should be determined by the end use

Dilution instruction and storage:

Already reconstituted in 200ul sterile H₂O. The antibody is stable for at least one year when stored at -20°C after reconstitution.

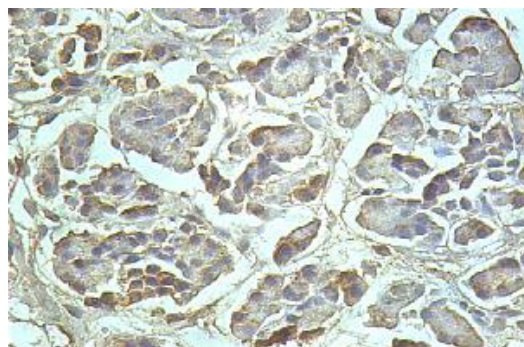
Avoid repeated freeze/thaw cycles

Hela HepG2 293T



WB 1:500

Western Blot analysis of Hela, HepG2 and 293T cell Lysate with anti-SCFD1 antibody



Immunohistochemical staining of formalin-fixed paraffin-embedded fetal pancreas showing cytoplasmic staining with anti-SCFD1 antibody at a dilution of 1/100.

Reference:

(1) Rose, J.E., Behm, F.M., Drgon, T., et al. Personalized smoking cessation: interactions between nicotine dose, dependence and quit-success genotype score. Mol. Med. 16 (7-8), 247-253 (2010)

For Research Use Only