



PDCL Antibody

E305365**Product description:**

Formulation: Lyophilized PDCL antibody purified by protein affinity column containing 1% BSA and 0.02% NaN_3

Catalog No.: E305365

Size: 100ug/200ul

Source:

Rabbit polyclonal PDCL⁽¹⁾ antibody was raised against a recombinant human PDCL protein 25-289aa (BC017227).

Species Reactivity:

Reacts with: Human

Predicted: mus, rat

Not yet tested in other species.

Application:

For research use only

ELISA titer: 1:20,000-1:80,000

Western blot analysis: 1:500-1:1,000

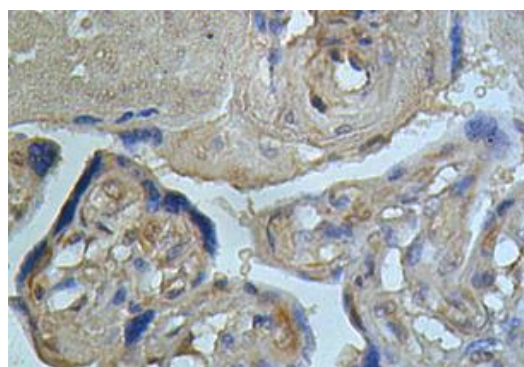
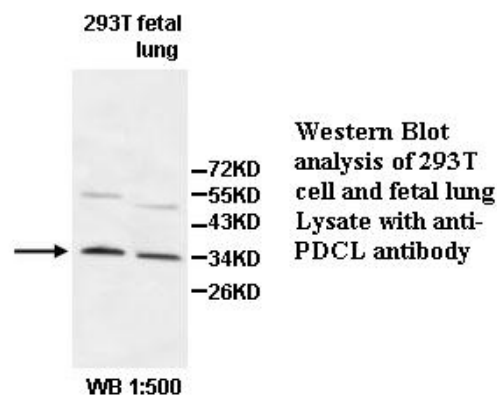
Immunohistochemistry: 1:100-1:500

Optimal dilutions/concentrations should be determined by the end use

Dilution instruction and storage:

Already reconstituted in 200ul sterile H_2O . The antibody is stable for at least one year when stored at -20°C after reconstitution.

Avoid repeated freeze/thaw cycles



Immunohistochemical staining of formalin-fixed paraffin-embedded placenta showing cytoplasmic staining with anti-PDCL antibody at a dilution of 1/100.

Reference:

- (1) Guzman-Hernandez, M.L., Vazquez-Macias, A., Carretero-Ortega, J., et al. Differential inhibitor of Gbetagamma signaling to AKT and ERK derived from phosphatidylinositol-3-OH kinase-like protein: effect on sphingosine 1-phosphate-induced endothelial cell migration and in vitro angiogenesis. *J. Biol. Chem.* 284 (27), 18334-18346 (2009)

For Research Use Only