



ALDH1A2 Antibody

E305409

Avoid repeated freeze/thaw cycles.

Product description:

Formulation: Lyophilized ALDH1A2 antibody purified by protein affinity column containing 1% BSA and 0.02% NaN₃

Catalog No.: E305409

Size: 100ug/200ul

Source:

Rabbit polyclonal ALDH1A2⁽¹⁾ antibody was raised against a recombinant human ALDH1A2 protein 210-465aa (BC030589).

Species Reactivity:

Reacts with: Human

Predicted: mus, rat

Not yet tested in other species.

Application:

For research use only

ELISA titer: 1:20,000-1:80,000

Western blot analysis: 1:1,000-1:2,000

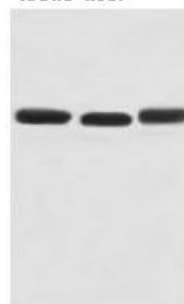
Immunohistochemistry: 1:100-1:500

Optimal dilutions/concentrations should be determined by the end user.

Dilution instruction and storage:

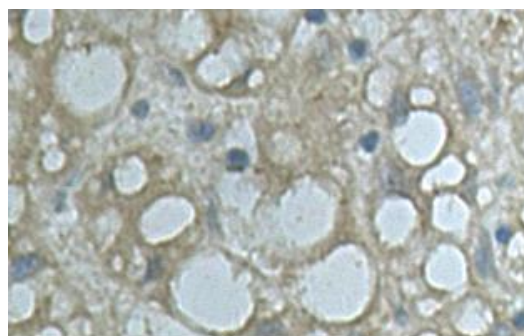
Already reconstituted in 200ul sterile H₂O. The antibody is stable for at least one year when stored at -20°C after reconstitution.

fetal testis fetal liver K562



WB 1:1000

Western Blot analysis of fetal testis, liver and K562 cell Lysate with anti-ALDH1A2 antibody



Immunohistochemical staining of formalin-fixed paraffin-embedded fetal liver showing cytoplasmic staining with anti-ALDH1A2 antibody at a dilution of 1/100.

Reference:

(1) El Kares, R., Manolescu, D.C., Lakhal-Chaieb, L., et al. A human ALDH1A2 gene variant is associated with increased newborn kidney size and serum retinoic acid. *Kidney Int.* 78 (1), 96-102 (2010)

For Research Use Only