



## IMPG1 Antibody

E305439

Avoid repeated freeze/thaw cycles.

**Product description:**

Formulation: Lyophilized IMPG1 antibody purified by protein affinity column containing 1% BSA and 0.02% NaN<sub>3</sub>

Catalog No.: E305439

Size: 100ug/200ul

**Source:**

Rabbit polyclonal IMPG1<sup>(1)</sup> antibody was raised against a recombinant human IMPG1 protein 217-437aa (BC117450).

**Species Reactivity:**

Reacts with: Human

Predicted: mus, rat

Not yet tested in other species.

**Application:**

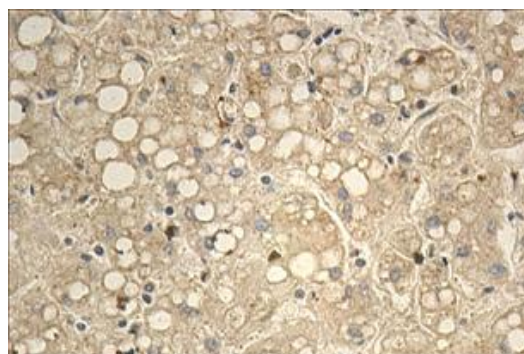
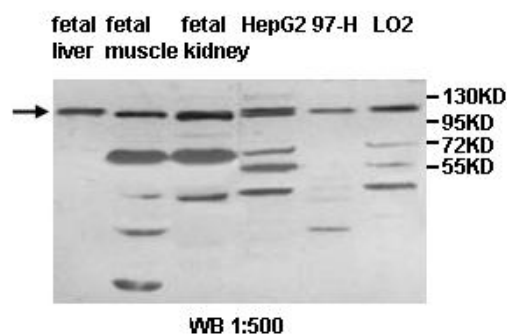
For research use only

ELISA titer: 1:20,000-1:80,000

Western blot analysis: 1:500-1:1,000

Immunohistochemistry: 1:100-1:500

Optimal dilutions/concentrations should be determined by the end user.



Immunohistochemical staining of formalin-fixed paraffin-embedded fetal liver staining with anti-IMPG1 antibody at a dilution of 1/100.

**Dilution instruction and storage:**

Already reconstituted in 200ul sterile H<sub>2</sub>O. The antibody is stable for at least one year when stored at -20°C after reconstitution.

**Reference:**

(1) Rose, J.E., Behm, F.M., Drgon, T., et al. Personalized smoking cessation: interactions between nicotine dose, dependence and quit-success genotype score. Mol. Med. 16 (7-8), 247-253 (2010)

**For Research Use Only**