



## MAP2 Antibody

E306020

**Product description:**

Formulation: Lyophilized MAP2 antibody purified by protein affinity column containing 1% BSA and 0.02% NaN<sub>3</sub>

Catalog No.: E306020

Size: 100ug/200ul

**Source:**

Rabbit polyclonal MAP2<sup>(1)</sup> antibody was raised against a recombinant human MAP2 protein 339-554aa (BC038857).

**Species Reactivity:**

Reacts with: Human

Predicted: mus, rat

Not yet tested in other species.

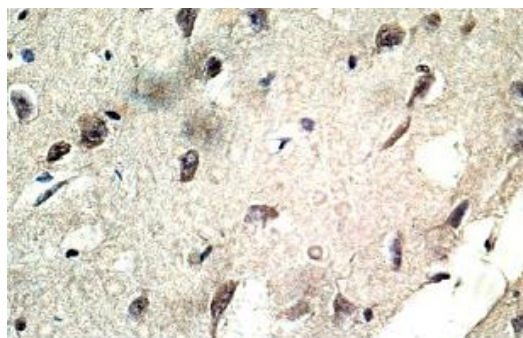
**Application:**

For research use only

ELISA titer: 1:20,000-1:80,000

Immunohistochemistry: 1:100-1:500

Optimal dilutions/concentrations should be determined by the end user.



**Immunohistochemical staining of formalin-fixed paraffin-embedded fetal brain showing cytoplasmic staining with anti-MAP2 antibody at a dilution of 1/100.**

**Dilution instruction and storage:**

Already reconstituted in 200ul sterile H<sub>2</sub>O.

The antibody is stable for at least one year when stored at -20°C after reconstitution.

Avoid repeated freeze/thaw cycles.

**Reference:**

(1) Song,Z., He,C.D., Sun,C. et al. Increased expression of MAP2 inhibits melanoma cell proliferation, invasion and tumor growth in vitro and in vivo. *Exp. Dermatol.* 19 (11), 958-964 (2010)

**For Research Use Only**