



## KATNA1 Antibody

E306023

**Product description:**

Formulation: Lyophilized KATNA1 antibody purified by protein affinity column containing 1% BSA and 0.02% NaN<sub>3</sub>

Catalog No.: E306023

Size: 100ug/200ul

**Source:**

Rabbit polyclonal KATNA1 (1) antibody was raised against a recombinant human KATNA1 protein 103-283aa (BC050428).

**Species Reactivity:**

Reacts with: Human

Predicted: mus, rat

Not yet tested in other species.

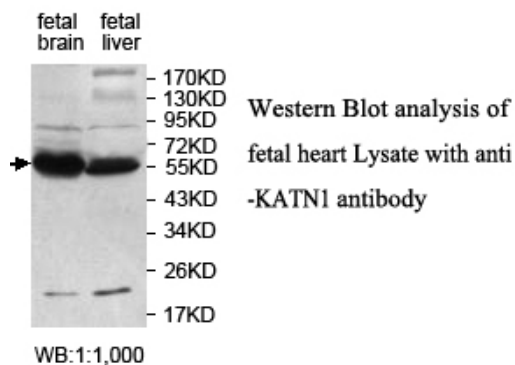
**Application:**

For research use only

ELISA titer: 1:20,000-1:80,000

Western blot analysis: 1:1,000-1:2,000

Optimal dilutions/concentrations should be determined by the end user.

**Dilution instruction and storage:**

Already reconstituted in 200ul sterile H<sub>2</sub>O. The antibody is stable for at least one year when stored at -20°C after reconstitution.

Avoid repeated freeze/thaw cycles.

**Reference:**

- (1) Olson, J.E., Wang, X., Pankratz, V.S. Centrosome-related genes, genetic variation, and risk of breast cancer. *Breast Cancer Res. Treat.* 125 (1), 221-228 (2011)

**For Research Use Only**