



## KATNB1 Antibody

E306026

**Product description:**

Formulation: Lyophilized KATNB1 antibody purified by protein affinity column containing 1% BSA and 0.02% NaN<sub>3</sub>

Catalog No.: E306026

Size: 100ug/200ul

**Source:**

Rabbit polyclonal KATNB1 <sup>(1)</sup> antibody was raised against a recombinant human KATNB1 protein 429-578aa (BC001353).

**Species Reactivity:**

Reacts with: Human

Predicted: mus, rat

Not yet tested in other species.

**Application:**

For research use only

ELISA titer: 1:20,000-1:80,000

Western blot analysis: 1:1,000-1:2,000

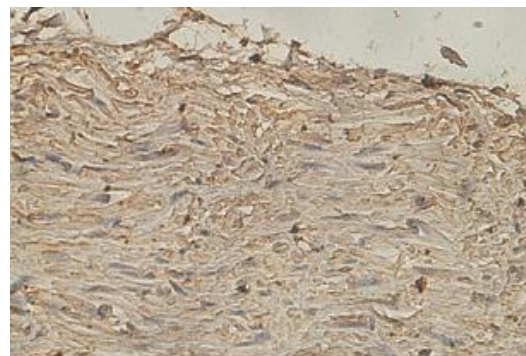
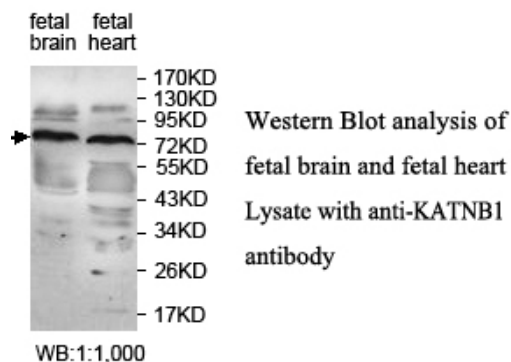
Immunohistochemistry: 1:100-1:500

Optimal dilutions/concentrations should be determined by the end user.

**Dilution instruction and storage:**

Already reconstituted in 200ul sterile H<sub>2</sub>O. The antibody is stable for at least one year when stored at -20°C after reconstitution.

Avoid repeated freeze/thaw cycles.



Immunohistochemical staining of formalin-fixed paraffin-embedded fetal stomach showing cytoplasmic staining with anti-KATNB1 antibody at a dilution of 1/100.

**Reference:**

(1) Olson, J.E., Wang, X., Pankratz, V.S., et al. Centrosome-related genes, genetic variation, and risk of breast cancer. Breast Cancer Res. Treat. 125 (1), 221-228 (2011)

**For Research Use Only**