



## KCTD17 Antibody

E306082

### Product description:

Formulation: Lyophilized KCTD17 antibody purified by protein affinity column containing 1% BSA and 0.02% NaN<sub>3</sub>

Catalog No.: E306082

Size: 100ug/200ul

### Source:

Rabbit polyclonal KCTD17 (1) antibody was raised against a recombinant human KCTD17 protein 67-230aa (BC031038).

### Species Reactivity:

Reacts with: Human

Predicted: rat, mus

Not yet tested in other species.

### Application:

For research use only

ELISA titer: 1:20,000-1:80,000

Western blot analysis: 1:500-1:1,000

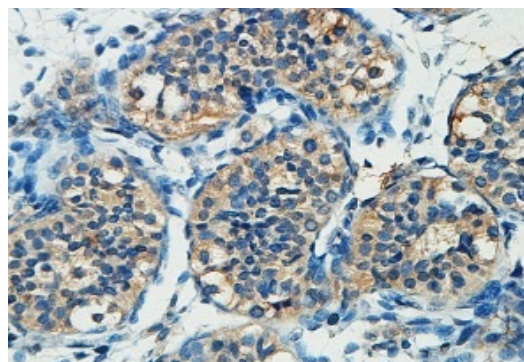
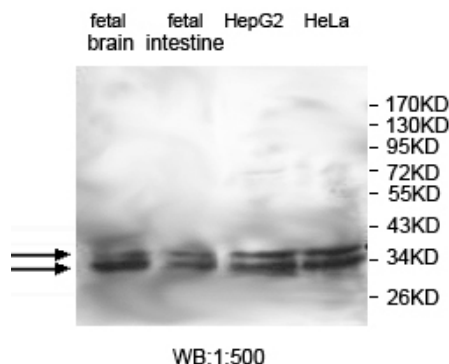
Immunohistochemistry: 1:100-1:500

Optimal dilutions/concentrations should be determined by the end user.

### Dilution instruction and storage:

Already reconstituted in 200ul sterile H<sub>2</sub>O. The antibody is stable for at least one year when stored at -20°C after reconstitution.

Avoid repeated freeze/thaw cycles.



**Immunohistochemical staining of formalin-fixed paraffin-embedded fetal testis staining with anti-KCTD17 antibody at a dilution of 1/100.**

### Reference:

- (1) Dunham, I., Shimizu, N., Roe, B.A. et al. The DNA sequence of human chromosome 22. Nature 402 (6761), 489-495 (1999)

**For Research Use Only**