



SUMO4 Antibody

E306088

Product description:

Formulation: Lyophilized SUMO4 antibody purified by protein affinity column containing 1% BSA and 0.02% NaN₃

Catalog No.: E306088

Size: 100ug/200ul

Source:

Rabbit polyclonal SUMO4 ⁽¹⁾ antibody was raised against a recombinant human SUMO4 protein 2-95aa (BC130305).

Species Reactivity:

Reacts with: Human

Predicted: mus, rat

Not yet tested in other species.

Application:

For research use only

ELISA titer: 1:20,000-1:80,000

Western blot analysis: 1:1,000-1:2,000

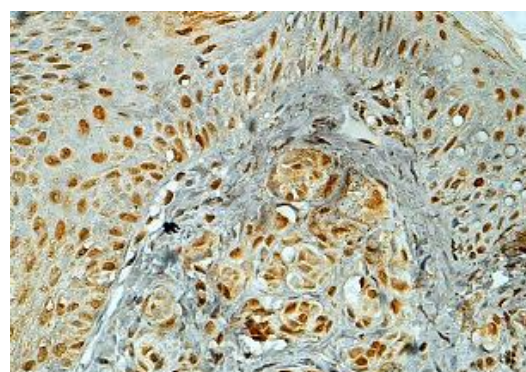
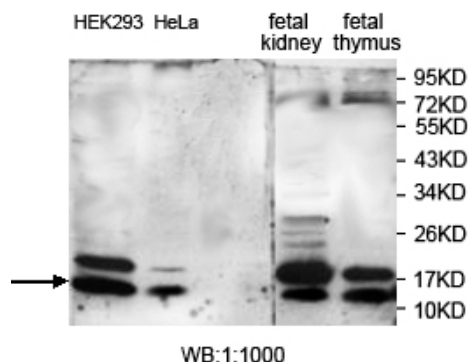
Immunohistochemistry: 1:100-1:500

Optimal dilutions/concentrations should be determined by the end user.

Dilution instruction and storage:

Already reconstituted in 200ul sterile H₂O. The antibody is stable for at least one year when stored at -20°C after reconstitution.

Avoid repeated freeze/thaw cycles.



Immunohistochemical staining of formalin-fixed paraffin-embedded breast carcinoma staining with anti-SUMO4 antibody at a dilution of 1/100.

Reference:

(1) Fallah, S., Jafarzadeh, M. and Hedayati, M. No association of the SUMO4 polymorphism M55V variant in type 2 diabetes in Iranian subjects. Diabetes Res. Clin. Pract. 90 (2), 191-195 (2010)

For Research Use Only