



MET Antibody

E306129**Product description:**

Formulation: Lyophilized rabbit anti-MET antibody purified by peptide affinity column containing 0.5% BSA and 0.02% NaN₃

Catalog No.: E306129

Size: 200ul

Source:

Rabbit polyclonal MET⁽¹⁾ antibody was raised against a peptide from 586-601 of human MET.

Species Reactivity:

Human

Not yet tested in other species.

Application:

For research use only

Peptide ELISA titer: 1:160,000

Western blot analysis: 1:1,000-2,000

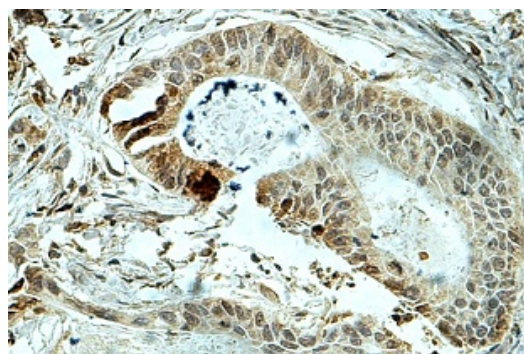
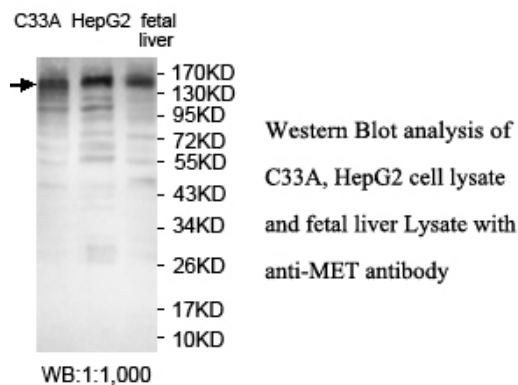
Immunohistochemistry: 1:100-1:500

Optimal dilutions/concentrations should be determined by the end user.

Dilution instruction and storage:

Already reconstituted in 200ul sterile H₂O. The antibody is stable for at least one year when stored at -20°C after reconstitution.

Avoid repeated freeze/thaw cycles.



Immunohistochemical staining of formalin-fixed paraffin-embedded colon carcinoma showing membrane staining with anti-C-MET antibody at a dilution of 1/100.

Reference:

(1) Browne,G.J., Fardilha,M.,Oxenham,S.K.et al. SARP, a new alternatively spliced protein phosphatase 1 and DNA interacting protein. Biochem. J. 402 (1), 187-196 (2007)

For Research Use Only