



MECP2 Antibody

E306170

Product description:

Formulation: Lyophilized MECP2 antibody purified by protein affinity column containing 1% BSA and 0.02% NaN₃

Catalog No.: E306170

Size: 100ug/200ul

Source:

Rabbit polyclonal MECP2 ⁽¹⁾ antibody was raised against a recombinant human MECP2 protein 2-211aa (BC011612).

Species Reactivity:

Reacts with: Human

Predicted: mus, rat

Not yet tested in other species.

Application:

For research use only

ELISA titer: 1:20,000-1:80,000

Western blot analysis: 1:1,000-1:2,000

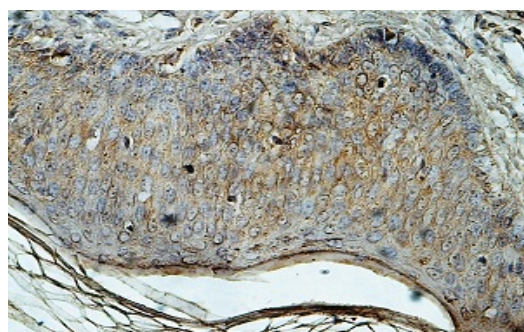
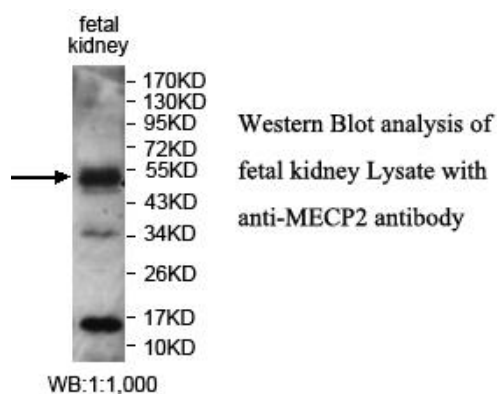
Immunohistochemistry: 1:100-1:500

Optimal dilutions/concentrations should be determined by the end user.

Dilution instruction and storage:

Already reconstituted in 200ul sterile H₂O. The antibody is stable for at least one year when stored at -20°C after

reconstitution. Avoid repeated freeze/defrost cycles.



Immunohistochemical staining of formalin-fixed paraffin-embedded fetal skin staining with anti-MECP2 antibody at a dilution of 1/100.

Reference:

(1) Percy, A.K. Rett syndrome: exploring the autism link. Arch. Neurol. 68 (8), 985-989 (2011)

For Research Use Only

SAIER BIOTECHNOLOGY

Phone: +86-22-66211462
Web: www.Saierbio.com

SAIER BIOTHCHNOLOGY INC

Fax: +86-22-66200849
Email: info@saierbio.com