



MAP1LC3A Antibody

E306218

Product description:

Formulation: Lyophilized MAP1LC3A antibody purified by protein affinity column containing 1% BSA and 0.02% NaN₃

Catalog No.: E306218

Size: 100ug/200ul

Source:

Rabbit polyclonal MAP1LC3A (1) antibody was raised against a recombinant human MAP1LC3A protein 2-121aa (BC015810).

Species Reactivity:

Reacts with: Human, mus

Predicted: rat

Not yet tested in other species.

Application:

For research use only

ELISA titer: 1:20,000-1:80,000

Western blot analysis: 1:500-1:1,000

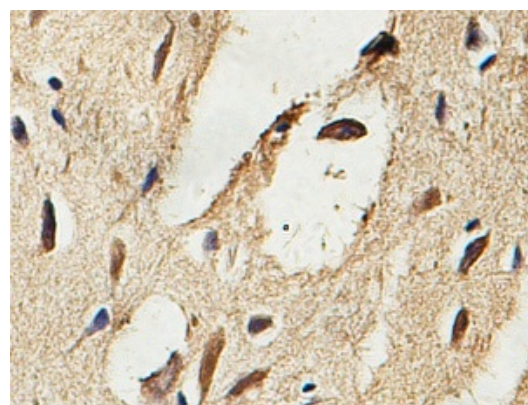
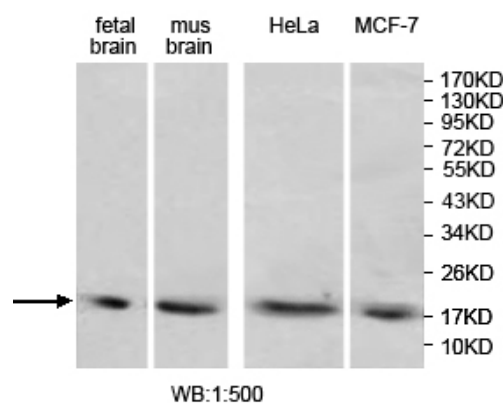
Immunohistochemistry: 1:100-1:500

Optimal dilutions/concentrations should be determined by the end user.

Dilution instruction and storage:

Already reconstituted in 200ul sterile H₂O. The antibody is stable for at least one year when stored at -20°C after reconstitution.

Avoid repeated freeze/thaw cycles.



Immunohistochemical staining of formalin-fixed paraffin-embedded fetal brain showing cytoplasmic staining with anti-MAP1LC3A antibody at a dilution of 1/100.

Reference:

- (1) Wu,G., Wei,G., Huang,J. et al. Decreased gene expression of LC3 in peripheral leucocytes of patients with coronary artery disease. Eur. J. Clin. Invest. 41 (9), 958-963 (2011)

For Research Use Only