



ECHDC1 Antibody

E306229

Product description:

Formulation: Lyophilized ECHDC1 antibody purified by protein affinity column containing 1% BSA and 0.02% NaN₃

Catalog No.: E306229

Size: 100ug/200ul

Source:

Rabbit polyclonal ECHDC1 (1) antibody was raised against a recombinant human ECHDC1 protein 74-269 aa (BC003549).

Species Reactivity:

Reacts with: Human, mus

Predicted: rat

Not yet tested in other species.

Application:

For research use only

ELISA titer: 1:20,000-1:80,000

Western blot analysis: 1:1,000-1:2,000

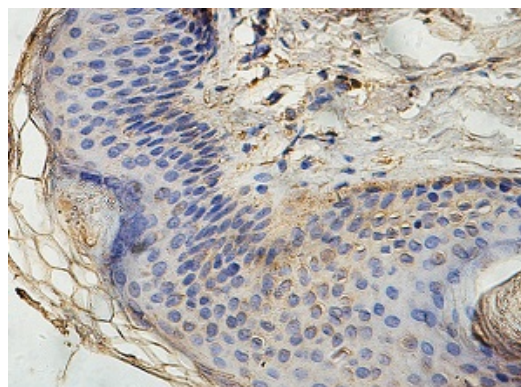
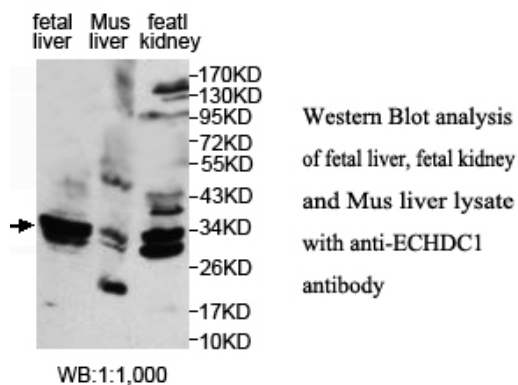
Immunohistochemistry: 1:100-1:500

Optimal dilutions/concentrations should be determined by the end user.

Dilution instruction and storage:

Already reconstituted in 200ul sterile H₂O. The antibody is stable for at least one year when stored at -20°C after reconstitution.

Avoid repeated freeze/thaw cycles.



Immunohistochemical staining of formalin-fixed paraffin-embedded fetal skin staining with anti-ECHDC1 antibody at a dilution of 1/100.

Reference:

- (1) Enciso-Mora, V., Hosking, F.J. and Houlston, R.S. Risk of breast and prostate cancer is not associated with increased homozygosity in outbred populations. Eur. J. Hum. Genet. 18 (8), 909-914 (2010)

For Research Use Only