



## EDEM2 Antibody

E306231

**Product description:**

Formulation: Lyophilized EDEM2  
antibody purified by protein affinity  
column containing 1% BSA and 0.02%  
NaN<sub>3</sub>  
Catalog No.: E306231  
Size: 100ug/200ul

**Source:**

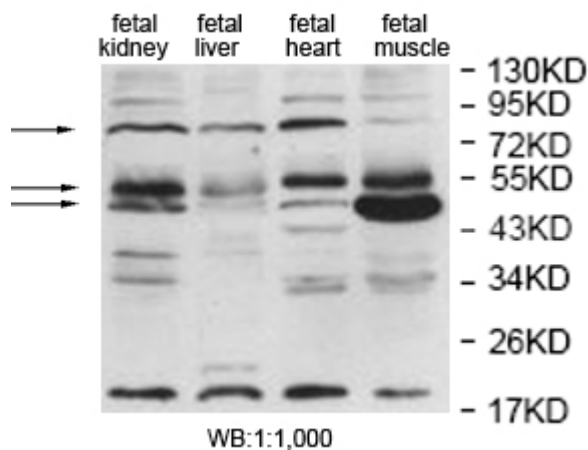
Rabbit polyclonal EDEM2 <sup>(1)</sup> antibody  
was raised against a recombinant human  
EDEM2 protein 31-235 aa (BC001371).

**Species Reactivity:**

Reacts with: Human  
Predicted: mus, rat  
Not yet tested in other species.

**Application:**

For research use only  
ELISA titer: 1:20,000-1:80,000  
Western blot analysis: 1:200-1:1,000  
Optimal dilutions/concentrations should  
be determined by the end user.

**Dilution instruction and storage:**

Already reconstituted in 200ul sterile  
H<sub>2</sub>O. The antibody is stable for at least  
one year when stored at -20°C after  
reconstitution.  
Avoid repeated freeze/thaw cycles.

**Reference:**

(1) Tang,W., Schwienbacher,C., Lopez,L.M.  
et al. Genetic associations for activated partial  
thromboplastin time and prothrombin time,  
their gene expression profiles, and risk of  
coronary artery disease Am. J. Hum. Genet.  
91 (1), 152-162 (2012)

**For Research Use Only**