



PPP1CB Antibody

E306281

Product description:

Formulation: Lyophilized PPP1CB antibody purified by protein affinity column containing 1% BSA and 0.02% NaN₃.

Catalog No.: E306281

Size: 100µg/200µl

Source:

Rabbit polyclonal PPP1CB ⁽¹⁾ antibody was raised against a recombinant human PPP1CB protein 30-319aa (BC002697).

Species Reactivity:

Reacts with: Human

Predicted: Rat, Mouse

Not yet tested in other species.

Application:

For research use only.

ELISA titer: 1:20,000-1:80,000

Western blot analysis: 1:1,000-1:2,000

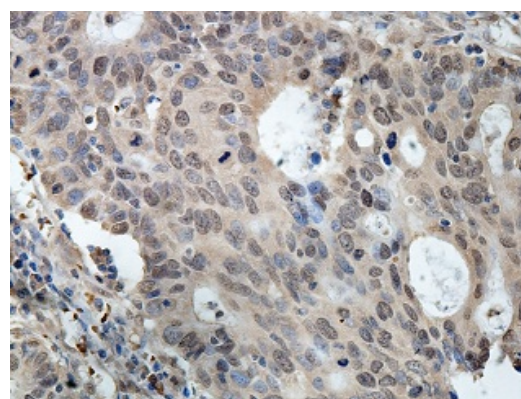
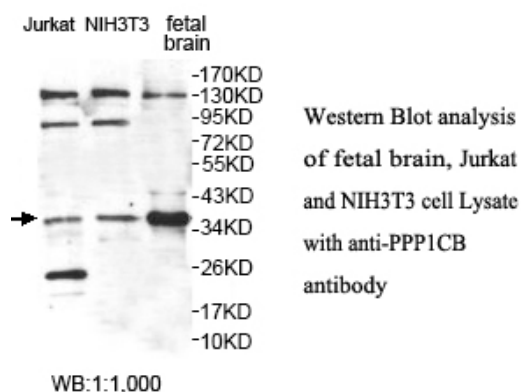
Immunohistochemistry: 1:100-1:500

Optimal dilutions/concentrations should be determined by the end user.

Dilution instruction and storage:

Already reconstituted in 200µl sterile H₂O. The antibody is stable for at least one year when stored at -20°C after reconstitution.

Avoid repeated freeze/defrost cycles.



Immunohistochemical staining of formalin-fixed paraffin-embedded colon carcinoma showing nuclear staining with anti-PPP1CB antibody at a dilution of 1/100

Reference:

(1) Poll,F., Doll,C. and Schulz,S. Rapid dephosphorylation of G protein-coupled receptors by protein phosphatase 1beta is required for termination of beta-arrestin-dependent signaling. J. Biol. Chem. 286 (38), 32931-32936 (2011)

For Research Use Only