



## APPL1 Antibody

E306369

**Product description:**

Formulation: Lyophilized APPL1 antibody purified by protein affinity column containing 1% BSA and 0.02% NaN<sub>3</sub>

Catalog No.: E306369

Size: 100ug/200ul

**Source:**

Rabbit polyclonal APPL1<sup>(1)</sup> antibody was raised against a recombinant human APPL1 protein 502-681aa (BC028599).

**Species Reactivity:**

Reacts with: Human

Predicted: rat, mus

Not yet tested in other species.

**Application:**

For research use only

ELISA titer: 1:20,000-1:80,000

Western blot analysis: 1:1,000-1:2,000

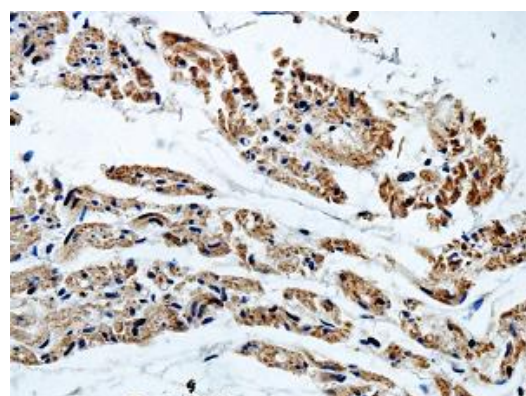
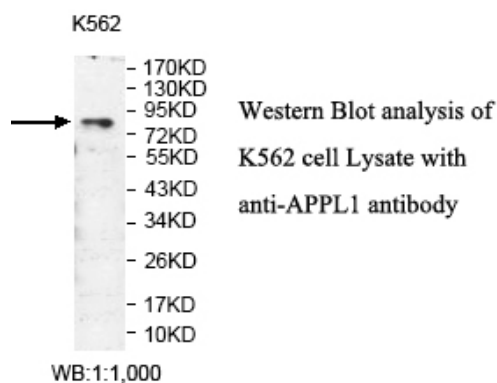
Immunohistochemistry: 1:100-1:500

Optimal dilutions/concentrations should be determined by the end user.

**Dilution instruction and storage:**

Already reconstituted in 200ul sterile H<sub>2</sub>O. The antibody is stable for at least one year when stored at -20°C after reconstitution.

Avoid repeated freeze/thaw cycles.



Immunohistochemical staining of formalin-fixed paraffin-embedded fetal heart showing cytoplasmic and nuclear staining with anti-APPL1 antibody at a dilution of 1/100

**Reference:**

(1) Lee, J.R., Hahn, H.S., Kim, Y.H. et al. Adaptor protein containing PH domain, PTB domain and leucine zipper (APPL1) regulates the protein level of EGFR by modulating its trafficking. *Biochem. Biophys. Res. Commun.* 415 (1), 206-211 (2011)

**For Research Use Only**