



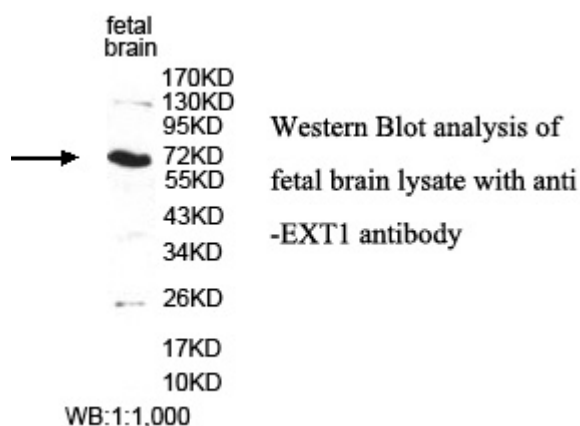
## EXT1 Antibody

**E306418****Product description:**

Formulation: Lyophilized EXT1 antibody purified by protein affinity column containing 1% BSA and 0.02% NaN<sub>3</sub>

Catalog No.: E306418

Size: 100ug/200ul

**Source:**

Rabbit polyclonal EXT1<sup>(1)</sup> antibody was raised against a recombinant human EXT1 protein 5-162aa (BC001174).

**Species Reactivity:**

Reacts with: Human

Predicted: mus, rat

Not yet tested in other species.

**Dilution instruction and storage:**

Already reconstituted in 200ul sterile H<sub>2</sub>O. The antibody is stable for at least one year when stored at -20°C after reconstitution.

Avoid repeated freeze/thaw cycles.

**Application:**

For research use only

ELISA titer: 1:20,000-1:80,000

Western blot analysis: 1:200-1:1,000

Optimal dilutions/concentrations should be determined by the end user.

**Reference:**

(1) Ciavarella,M., Coco,M., Baorda,F. ,et al. 20 novel point mutations and one large deletion in EXT1 and EXT2 genes: report of diagnostic screening in a large Italian cohort of patients affected by hereditary multiple exostosis. Gene 515 (2), 339-348 (2013)

**For Research Use Only**