



ARHGEF2 Antibody

E306423

Product description:

Formulation: Lyophilized ARHGEF2 antibody purified by protein affinity column containing 1% BSA and 0.02% NaN₃

Catalog No.: E306423

Size: 100ug/200ul

Source:

Rabbit polyclonal ARHGEF2 ⁽¹⁾ antibody was raised against a recombinant human ARHGEF2 protein 633-805aa (BC020567).

Species Reactivity:

Reacts with: Human

Predicted: mus, rat

Not yet tested in other species.

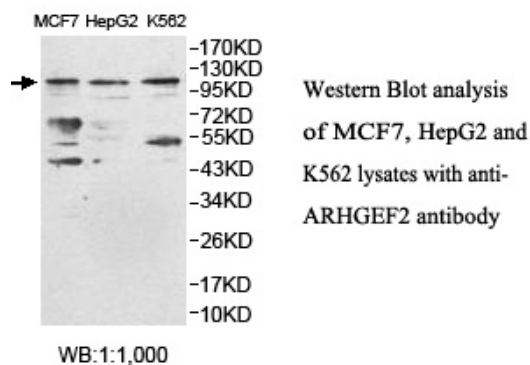
Application:

For research use only

ELISA titer: 1:20,000-1:80,000

Western blot analysis: 1:500-1:1,000

Optimal dilutions/concentrations should be determined by the end user.

**Dilution instruction and storage:**

Already reconstituted in 200ul sterile H₂O. The antibody is stable for at least one year when stored at -20°C after reconstitution.

Avoid repeated freeze/thaw cycles.

Reference:

- (1) Pathak,R., Delorme-Walker,V.D., Howell,M.C., et al. The microtubule-associated Rho activating factor GEF-H1 interacts with exocyst complex to regulate vesicle traffic. Dev. Cell 23 (2), 397-411 (2012)

For Research Use Only