



LEPREL1 Antibody

E306443

Product description:

Formulation: Lyophilized LEPREL1 antibody purified by protein affinity column containing 1% BSA and 0.02% NaN₃.

Catalog No.: E306443

Size: 100µg/200µl

Source:

Rabbit polyclonal LEPREL1⁽¹⁾ antibody was raised against a recombinated human LEPREL1 protein 233-399aa (BC005029).

Species Reactivity:

Reacts with: Human

Predicted: Rat, Mouse

Not yet tested in other species.

Application:

For research use only.

ELISA titer: 1:20,000-1:80,000

Western blot analysis: 1:1,000-1:2,000

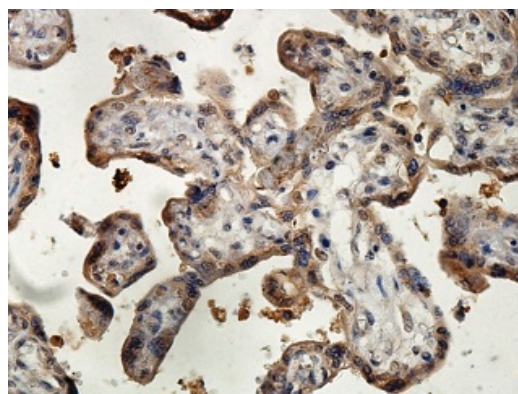
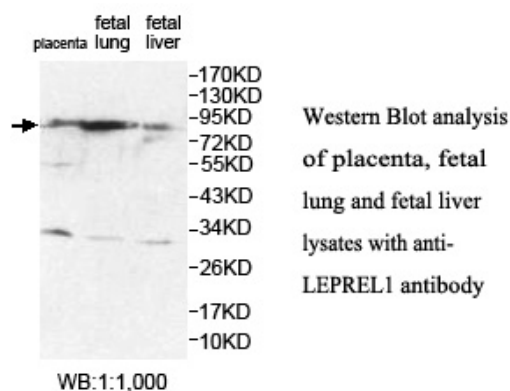
Immunohistochemistry: 1:100-1:500

Optimal dilutions/concentrations should be determined by the end user.

Dilution instruction and storage:

Already reconstituted in 200ul sterile H₂O. The antibody is stable for at least one year when stored at -20°C after reconstitution.

Avoid repeated freeze/defrost cycles.



Immunohistochemical staining of formalin-fixed paraffin-embedded placenta showing cytoplasmic staining with anti-LEPREL1 antibody at a dilution of 1/100

Reference:

(1) Mordechai,S., Gradstein,L., Pasanen,A., et al. High myopia caused by a mutation in LEPREL1, encoding prolyl 3-hydroxylase 2. Am. J. Hum. Genet. 89 (3), 438-445 (2011)

For Research Use Only