



ARHGEF9 Antibody

E306448

Avoid repeated freeze/thaw cycles.

Product description:

Formulation: Lyophilized ARHGEF9 antibody purified by protein affinity column containing 1% BSA and 0.02% NaN_3 .

Catalog No.: E306448

Size: 100 μg /200 μl

Source:

Rabbit polyclonal ARHGEF9 ⁽¹⁾ antibody was raised against a recombinant human ARHGEF9 protein 66-255aa (BC117406).

Species Reactivity:

Reacts with: Human

Predicted: Rat, Mouse

Not yet tested in other species.

Application:

For research use only.

ELISA titer: 1:20,000-1:80,000

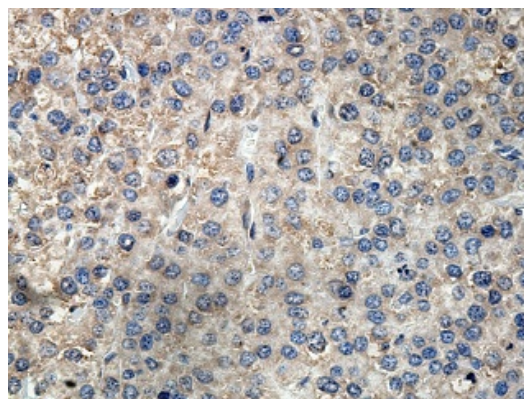
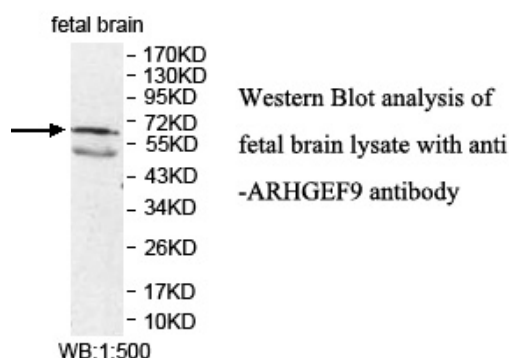
Western blot analysis: 1:500-1:1,000

Immunohistochemistry: 1:100-1:500

Optimal dilutions/concentrations should be determined by the end user.

Dilution instruction and storage:

Already reconstituted in 200 μl sterile H_2O . The antibody is stable for at least one year when stored at -20°C after reconstitution.



Immunohistochemical staining of formalin-fixed paraffin-embedded hepatocarcinoma showing cytoplasmic staining with anti-ARHGEF9 antibody at a dilution of 1/100

Reference:

(1) Nagae, R., Sato, K., Yasui, Y., et al. Gs and Gq signalings regulate hPEM-2-induced cell responses in Neuro-2a cells. Biochem. Biophys. Res. Commun. 415 (1), 168-173 (2011)

For Research Use Only