



## ARHGDIG Antibody

E306485

**Product description:**

Formulation: Lyophilized ARHGDIG antibody purified by protein affinity column containing 1% BSA and 0.02%  $\text{NaN}_3$ .

Catalog No.: E306485

Size: 100 $\mu\text{g}$ /200 $\mu\text{l}$

**Source:**

Rabbit polyclonal ARHGDIG<sup>(1)</sup> antibody was raised against a recombinant human ARHGDIG protein 27-205aa (BC047699).

**Species Reactivity:**

Reacts with: Human

Predicted: Rat, Mouse

Not yet tested in other species.

**Application:**

For research use only.

ELISA titer: 1:20,000-1:80,000

Western blot analysis: 1:1,000-1:2,000

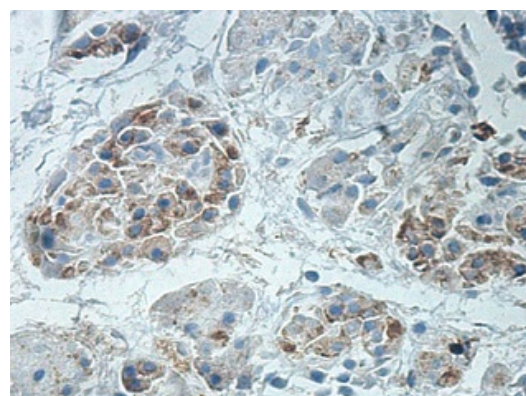
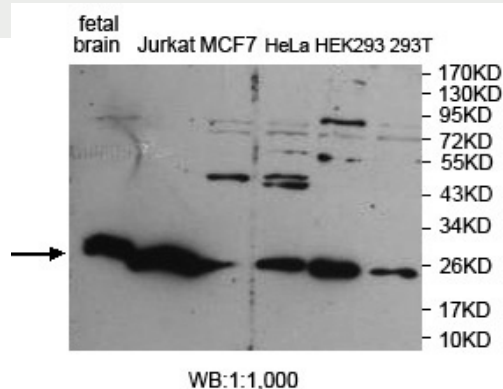
Immunohistochemistry: 1:100-1:500

Optimal dilutions/concentrations should be determined by the end user.

**Dilution instruction and storage:**

Already reconstituted in 200 $\mu\text{l}$  sterile  $\text{H}_2\text{O}$ . The antibody is stable for at least one year when stored at  $-20^\circ\text{C}$  after reconstitution.

Avoid repeated freeze/defrost cycles.



Immunohistochemical staining of formalin-fixed paraffin-embedded fetal pancreas showing cytoplasmic staining with anti-ARHGDIG antibody at a dilution of 1/100

**Reference:**

(1) Wooten, E.C., Iyer, L.K., Montefusco, M.C., et al. Application of gene network analysis techniques identifies AXIN1/PDIA2 and endoglin haplotypes associated with bicuspid aortic valve. PLoS ONE 5 (1), E8830 (2010)

**For Research Use Only**