



## ARHGEF15 Antibody

E306487

**Product description:**

Formulation: Lyophilized ARHGEF15 antibody purified by protein affinity column containing 1% BSA and 0.02% NaN<sub>3</sub>

Catalog No.: E306487

Size: 100ug/200ul

**Source:**

Rabbit polyclonal ARHGEF15 <sup>(1)</sup> antibody was raised against a recombinant human ARHGAP28 protein 470-668aa (BC036749).

**Species Reactivity:**

Reacts with: Human

Predicted: mus, rat

Not yet tested in other species.

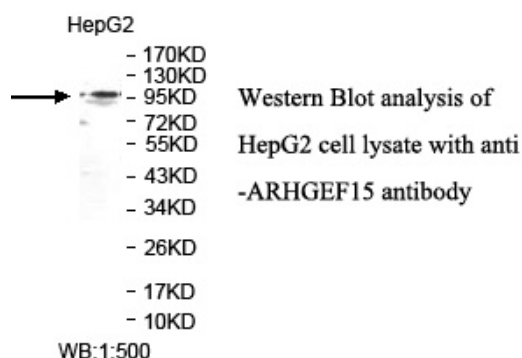
**Application:**

For research use only

ELISA titer: 1:20,000-1:80,000

Western blot analysis: 1:500-1:1,000

Optimal dilutions/concentrations should be determined by the end user.

**Dilution instruction and storage:**

Already reconstituted in 200ul sterile H<sub>2</sub>O. The antibody is stable for at least one year when stored at -20°C after reconstitution.

Avoid repeated freeze/thaw cycles.

**Reference:**

(1) Dalva, M.B. Ephrecting excitatory synapse development. Cell 143 (3), 341-342 (2010)

**For Research Use Only**