



ARHGEF16 Antibody

E306488

Product description:

Formulation: Lyophilized ARHGEF16 antibody purified by protein affinity column containing 1% BSA and 0.02% NaN_3 .

Catalog No.: E306488

Size: 100 μg /200 μl

Source:

Rabbit polyclonal ARHGEF16⁽¹⁾ antibody was raised against a recombinated human ARHGEF16 protein 84-256aa (BC002681).

Species Reactivity:

Reacts with: Human

Predicted: Rat, Mouse

Not yet tested in other species.

Application:

For research use only.

ELISA titer: 1:20,000-1:80,000

Western blot analysis: 1:1,000-1:2,000

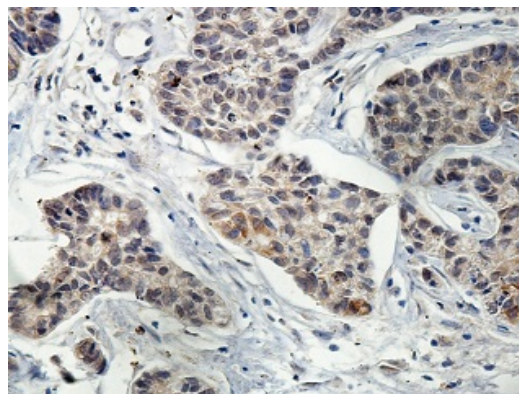
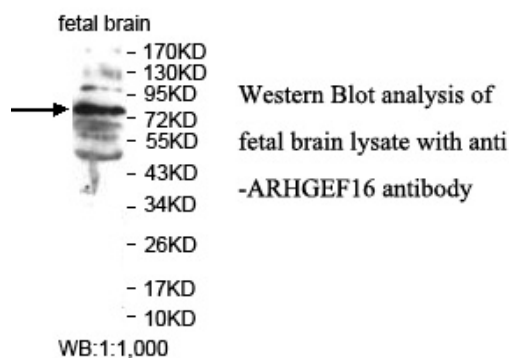
Immunohistochemistry: 1:100-1:500

Optimal dilutions/concentrations should be determined by the end user.

Dilution instruction and storage:

Already reconstituted in 200 μl sterile H_2O . The antibody is stable for at least one year when stored at -20°C after reconstitution.

Avoid repeated freeze/defrost cycles.



Immunohistochemical staining of formalin-fixed paraffin-embedded breast carcinoma showing cytoplasmic staining with anti-ARHGEF16 antibody at a dilution of 1/100

Reference:

(1) Oliver, A.W., He, X., Borthwick, K., et al. The HPV16 E6 binding protein Tip-1 interacts with ARHGEF16, which activates Cdc42. Br. J. Cancer 104 (2), 324-331 (2011)

For Research Use Only