



ARL6 Antibody

E306535

Product description:

Formulation: Lyophilized ARL6 antibody purified by protein affinity column containing 1% BSA and 0.02% NaN₃

Catalog No.:E306535

Size: 100ug/200ul

Source:

Rabbit polyclonal ARL6⁽¹⁾ antibody was raised against a recombinant human ARL6 protein2-186aa (BC024239).

Species Reactivity:

Reacts with: Human

Predicted: mus, rat

Not yet tested in other species.

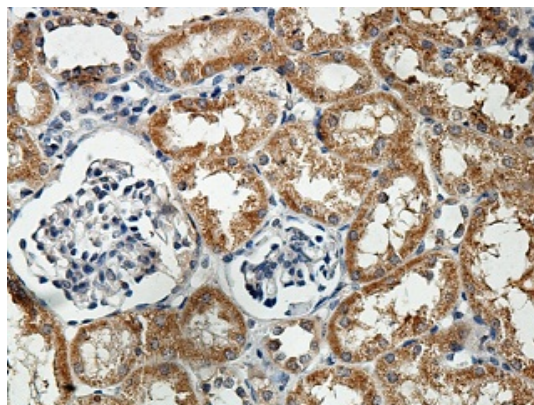
Application:

For research use only

ELISA titer: 1:20,000-1:80,000

Immunohistochemistry: 1:100-1:500

Optimal dilutions/concentrations should be determined by the end user.



Immunohistochemical staining of formalin-fixed paraffin-embedded fetal kidney showing cytoplasmic staining with anti-ARL6 antibody at a dilution of 1/100

Dilution instruction and storage:

Already reconstituted in 200ul sterile H₂O. The antibody is stable for at least one year when stored at -20°C after reconstitution.

Avoid repeated freeze/thaw cycles.

Reference:

(1) Pretorius,P.R., Aldahmesh,M.A., Alkuraya, F.S.et al. Functional analysis of BBS3 A89V that results in non-syndromic retinal degeneration. Hum. Mol. Genet. 20 (8), 1625-1632 (2011)

For Research Use Only