



POLD2 Antibody

E306540

Product description:

Formulation: Lyophilized POLD2 antibody purified by protein affinity column containing 1% BSA and 0.02% NaN_3 .

Catalog No.: E306540

Size: 100 μg /200 μl

Source:

Rabbit polyclonal POLD2 ⁽¹⁾ antibody was raised against a recombinated human POLD2 protein 261-431aa (BC000459).

Species Reactivity:

Reacts with: Human

Predicted: Rat, Mouse

Not yet tested in other species.

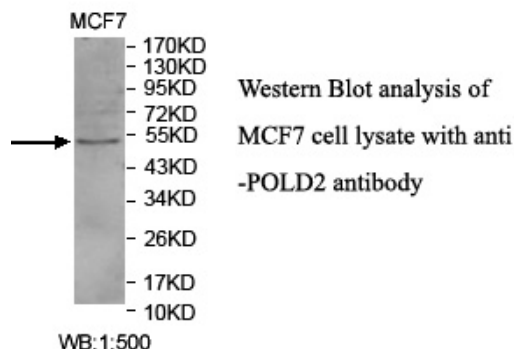
Application:

For research use only.

ELISA titer: 1:20,000-1:80,000

Western blot analysis: 1:500-1:1,000

Optimal dilutions/concentrations should be determined by the end user.

**Dilution instruction and storage:**

Already reconstituted in 200 μl sterile H_2O . The antibody is stable for at least one year when stored at -20°C after reconstitution.

Avoid repeated freeze/thaw cycles.

Reference:

(1) Elgaaen, B.V., Haug, K.B., Wang, J., et al. POLD2 and KSP37 (FGFBP2) correlate strongly with histology, stage and outcome in ovarian carcinomas. PLoS ONE 5 (11), E13837 (2010)

For Research Use Only