



## ARMC8 Antibody

E306557

**Product description:**

Formulation: Lyophilized ARMC8 antibody purified by protein affinity column containing 1% BSA and 0.02% NaN<sub>3</sub>.

Catalog No.: E306557

Size: 100µg/200µl

**Source:**

Rabbit polyclonal ARMC8 <sup>(1)</sup> antibody was raised against a recombinated human ARMC8 protein 10-178aa (BC013424).

**Species Reactivity:**

Reacts with: Human

Predicted: Rat, Mouse

Not yet tested in other species.

**Application:**

For research use only.

ELISA titer: 1:20,000-1:80,000

Western blot analysis: 1:1,000-1:2,000

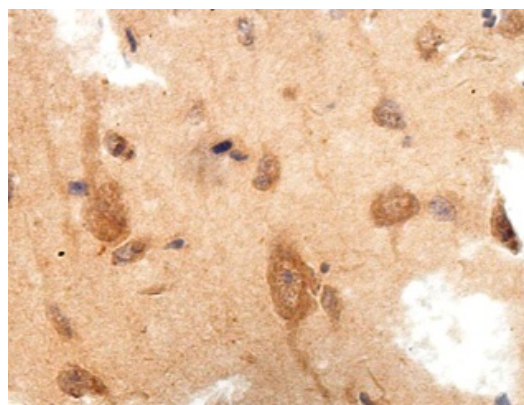
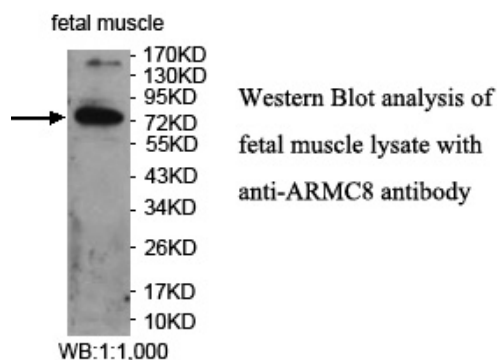
Immunohistochemistry: 1:100-1:500

Optimal dilutions/concentrations should be determined by the end user.

**Dilution instruction and storage:**

Already reconstituted in 200ul sterile H<sub>2</sub>O. The antibody is stable for at least one year when stored at -20°C after reconstitution.

Avoid repeated freeze/defrost cycles.



Immunohistochemical staining of formalin-fixed paraffin-embedded fetal brain staining with anti-ARMC8 antibody at a dilution of 1/100

**Reference:**

(1) Kobayashi,N., Yang,J., Ueda,A., et al. RanBPM, Muskelein, p48EMLP, p44CTLH, and the armadillo-repeat proteins ARMC8alpha and ARMC8beta are components of the CTLH complex. Gene 396 (2), 236-247 (2007)

**For Research Use Only**