



FCHO1 Antibody

E306583

Product description:

Formulation: Lyophilized FCHO1 antibody purified by protein affinity column containing 1% BSA and 0.02% NaN₃.

Catalog No.:E306583

Size: 100µg/200µl

Source:

Rabbit polyclonal FCHO1⁽¹⁾ antibody was raised against a recombinated human FCHO1 protein 19-194aa (BC028021).

Species Reactivity:

Reacts with: Human

Predicted: Rat, Mouse

Not yet tested in other species.

Application:

For research use only.

ELISA titer: 1:20,000-1:80,000

Western blot analysis: 1:1,000-1:2,000

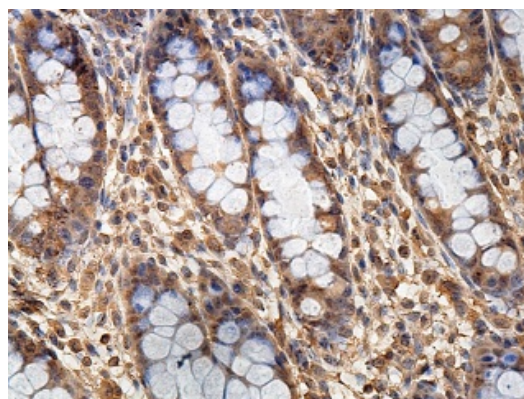
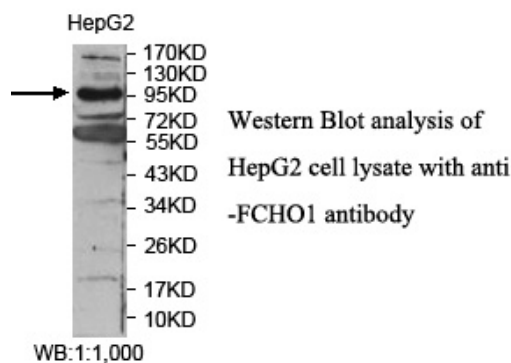
Immunohistochemistry: 1:100-1:500

Optimal dilutions/concentrations should be determined by the end user.

Dilution instruction and storage:

Already reconstituted in 200ul sterile H₂O. The antibody is stable for at least one year when stored at -20°C after reconstitution.

Avoid repeated freeze/thaw cycles.



Immunohistochemical staining of formalin-fixed paraffin-embedded fetal colon with anti-FCHO1 antibody at a dilution of 1/100

Reference:

(1) Umasankar,P.K., Sanker,S., Thieman,J.R., et al. Distinct and separable activities of the endocytic clathrin-coat components Fcho1/2 and AP-2 in developmental patterning. Nat. Cell Biol. 14 (5), 488-501 (2012)

For Research Use Only