



YES1 Antibody

E306649

Product description:

Formulation: Lyophilized YES1 antibody purified by protein affinity column containing 1% BSA and 0.02% NaN_3 .

Catalog No.: E306649

Size: 100 μg /200 μl

Source:

Rabbit polyclonal YES1⁽¹⁾ antibody was raised against a recombinant human YES1 protein 416-538aa (BC048960).

Species Reactivity:

Reacts with: Human

Predicted: Rat, Mouse

Not yet tested in other species.

Application:

For research use only.

ELISA titer: 1:20,000-1:80,000

Western blot analysis: 1:500-1:1,000

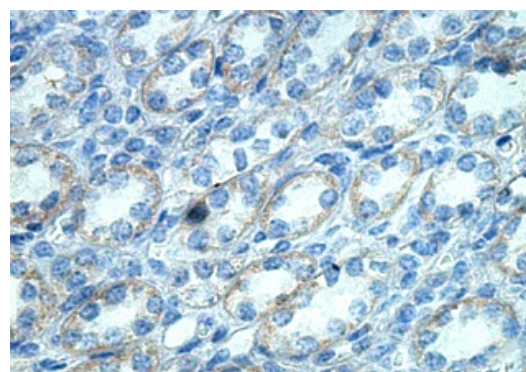
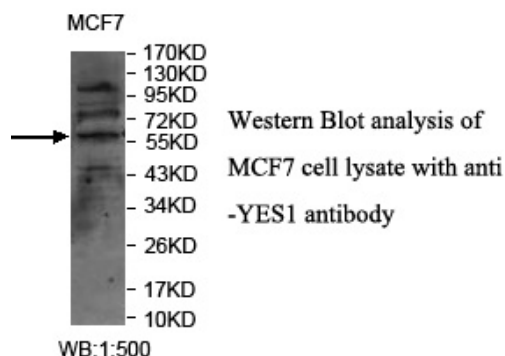
Immunohistochemistry: 1:100-1:500

Optimal dilutions/concentrations should be determined by the end user.

Dilution instruction and storage:

Already reconstituted in 200 μl sterile H_2O . The antibody is stable for at least one year when stored at -20°C after reconstitution.

Avoid repeated freeze/thaw cycles.



Immunohistochemical staining of formalin-fixed paraffin-embedded fetal kidney showing cytoplasmic staining with anti-YES1 antibody at a dilution of 1/100

Reference:

(1) Hamamura, K., Tsuji, M., Hotta, H., et al. Functional activation of Src family kinase yes protein is essential for the enhanced malignant properties of human melanoma cells expressing ganglioside GD3. J. Biol. Chem. 286 (21), 18526-18537 (2011)

For Research Use Only