



CARD11 Antibody

E306812

Product description:

Formulation: Lyophilized CARD11 antibody purified by protein affinity column containing 1% BSA and 0.02% NaN₃.

Catalog No.: E306812

Size: 100µg/200µl

Source:

Rabbit polyclonal CARD11 ⁽¹⁾ antibody was raised against a recombinated human CARD11 protein 772-940aa (BC111719).

Species Reactivity:

Reacts with: Human

Predicted: Rat, Mouse

Not yet tested in other species.

Application:

For research use only.

ELISA titer: 1:20,000-1:80,000

Western blot analysis: 1:1,000-1:2,000

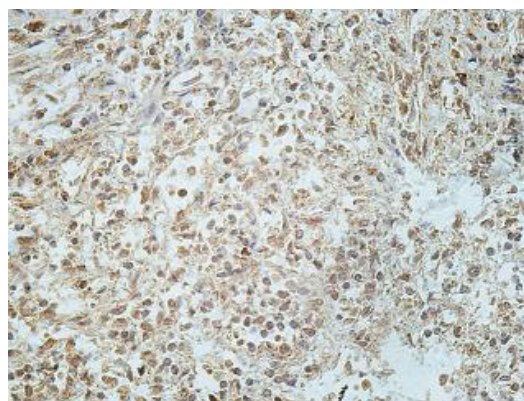
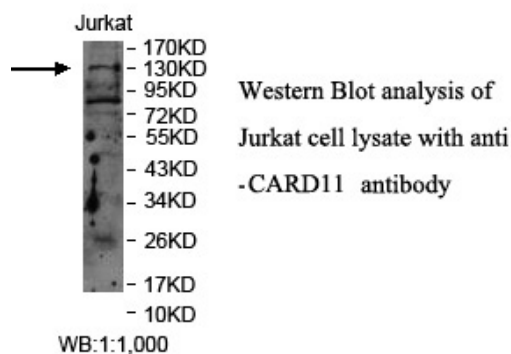
Immunohistochemistry: 1:100-1:500

Optimal dilutions/concentrations should be determined by the end user.

Dilution instruction and storage:

Already reconstituted in 200ul sterile H₂O. The antibody is stable for at least one year when stored at -20°C after reconstitution.

Avoid repeated freeze/thaw cycles.



Immunohistochemical staining of formalin-fixed paraffin-embedded fetal spleen showing cytoplasmic staining with anti-CARD11 antibody at a dilution of 1/100

Reference:

(1) Liu,Y., Song,R., Gao,Y., et al. Protein kinase C-delta negatively regulates T cell receptor-induced NF-kappaB activation by inhibiting the assembly of CARMA1 signalosome. J. Biol. Chem. 287 (24), 20081-20087 (2012)

For Research Use Only