



## Clusterin Antibody

E306816

### Product description:

Formulation: Clusterin antibody purified by protein affinity column containing 1% BSA and 0.02% NaN<sub>3</sub>

Catalog No.: E306816

Size: 100ug/200ul

### Source:

Rabbit polyclonal Clusterin <sup>(1)</sup> antibody was raised against a recombinant human Clusterin protein 245-449aa (BC010514).

### Species Reactivity:

Reacts with: Human

Predicted: mus, rat

Not yet tested in other species.

### Application:

For research use only

ELISA titer: 1:20,000-1:80,000

Western blot analysis: 1:200-1:1,000

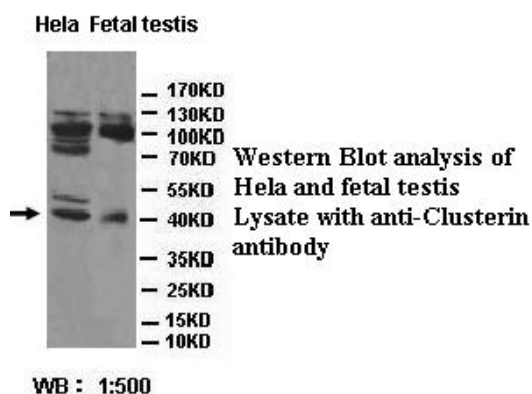
Immunohistochemistry: 1:100-1:500

Optimal dilutions/concentrations should be determined by the end use

### Dilution instruction and storage:

Already reconstituted in 200ul sterile H<sub>2</sub>O. The antibody is stable for at least one year when stored at -20°C after reconstitution.

Avoid repeated freeze/thaw cycles



Immunohistochemical staining of formalin-fixed paraffin-embedded fetal brain showing nucleus and cytoplasm staining with anti-Clusterin antibody at a dilution of 1/100

### Reference:

- (1) Klimkowicz-Mrowiec, A., Sado, M., Dziubek, A., et al. Lack of association of CR1, PICALM and CLU gene polymorphisms with Alzheimer disease in a Polish population. Neurol. Neurochir. Pol. 47 (2), 157-160 (2013)

**For Research Use Only**