



PPAPDC1A Antibody

E306838

Product description:

Formulation: Lyophilized PPAPDC1A antibody purified by protein affinity column containing 1% BSA and 0.02% NaN₃

Catalog No.: E306838

Size: 100ug/200ul

Source:

Rabbit polyclonal PPAPDC1A (1) antibody was raised against a recombinant human PPAPDC1A protein 89-149aa (BC132787).

Species Reactivity:

Reacts with: Human

Predicted: mus , rat

Not yet tested in other species.

Application:

For research use only

ELISA titer: 1:20,000-1:80,000

Western blot analysis: 1:1,000-1:2,000

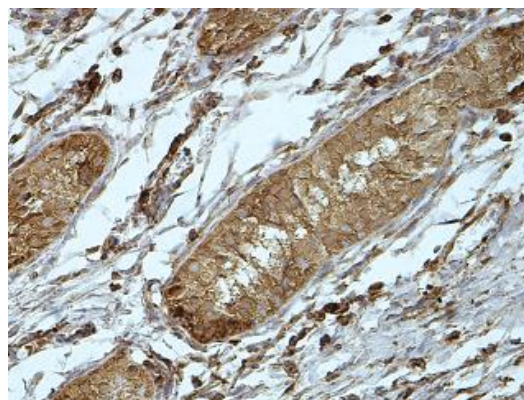
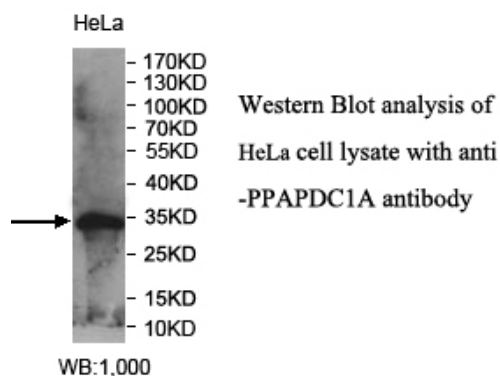
Immunohistochemistry: 1:100-1:500

Optimal dilutions/concentrations should be determined by the end user.

Dilution instruction and storage:

Already reconstituted in 200ul sterile H₂O. The antibody is stable for at least one year when stored at -20°C after reconstitution.

Avoid repeated freeze/defrost cycles.



Immunohistochemical staining of formalin-fixed paraffin-embedded fetal testis showing membrane staining with anti-PPAPDC1A antibody at a dilution of 1/100

Reference:

- (1) Takeuchi, M., Harigai, M., Momohara, S. et al. Cloning and characterization of DPPL1 and DPPL2, representatives of a novel type of mammalian phosphatidate phosphatase. Gene 399 (2), 174-180 (2007)

For Research Use Only