



## PPEF1 Antibody

E306843

**Product description:**

Formulation: Lyophilized PPEF1 antibody purified by protein affinity column containing 1% BSA and 0.02% NaN<sub>3</sub>

Catalog No.: E306843

Size: 100ug/200ul

**Source:**

Rabbit polyclonal PPEF1 (1) antibody was raised against a recombinant human PPEF1 protein 38-153aa (BC036026).

**Species Reactivity:**

Reacts with: Human

Predicted: mus , rat

Not yet tested in other species.

**Application:**

For research use only

ELISA titer: 1:20,000-1:80,000

Western blot analysis: 1:500-1:1,000

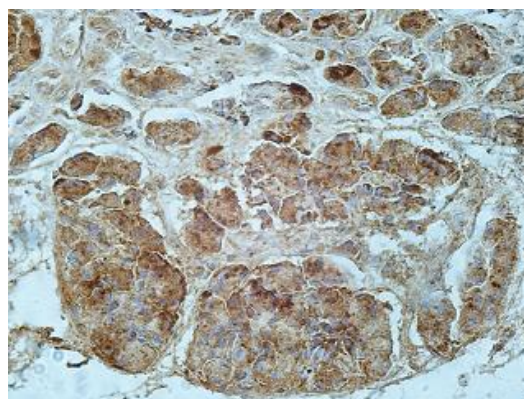
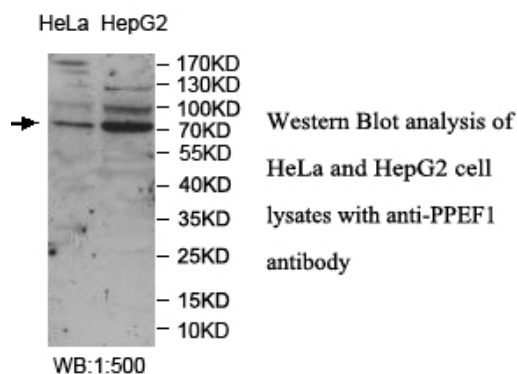
Immunohistochemistry: 1:100-1:500

Optimal dilutions/concentrations should be determined by the end user.

**Dilution instruction and storage:**

Already reconstituted in 200ul sterile H<sub>2</sub>O. The antibody is stable for at least one year when stored at -20°C after reconstitution.

Avoid repeated freeze/thaw cycles.



**Immunohistochemical staining of formalin-fixed paraffin-embedded fetal pancreas showing cytoplasmic staining with anti-PPEF1 antibody at a dilution of 1/100**

**Reference:**

- (1) Ho,P., Dai,K.S. and Chen,H.L. Molecular cloning of a novel PPEF-1 gene variant from a T-cell lymphoblastic lymphoma cell line. Recent Pat DNA Gene Seq 6 (1), 72-77 (2012)

**For Research Use Only**