



## MCTP2 Antibody

E306904

### Product description:

**Formulation:** Lyophilized MCTP2 antibody purified by protein affinity column containing 1% BSA and 0.02% NaN<sub>3</sub>

Catalog No.: E306904

Size: 100ug/200ul

### Source:

Rabbit polyclonal MCTP2 <sup>(1)</sup> antibody was raised against a recombinate human MCTP2 protein 302-494aa (BC131527).

### Species Reactivity:

Reacts with: Human

Predicted: rat, mus

Not yet tested in other species.

### Application:

For research use only

ELISA titer: 1:20,000-1:80,000

Western blot analysis: 1:200-1:1,000

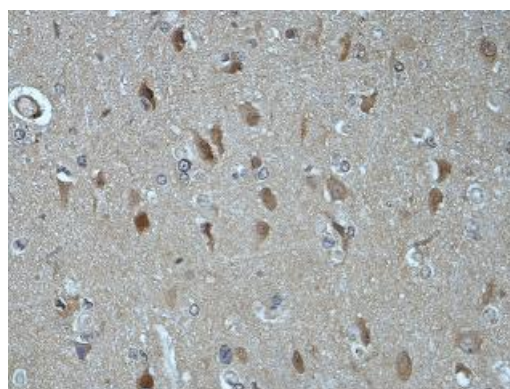
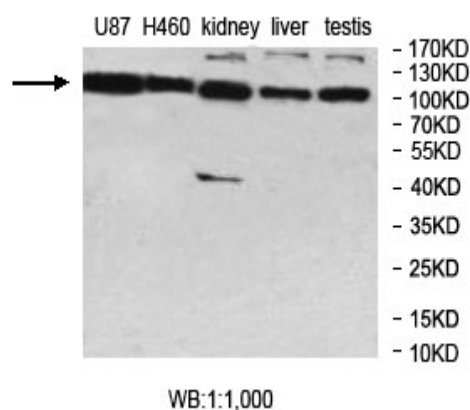
Immunohistochemistry: 1:100-1:500

Optimal dilutions/concentrations should be determined by the end user.

### Dilution instruction and storage:

Already reconstituted in 200ul sterile H<sub>2</sub>O. The antibody is stable for at least one year when stored at -20°C after reconstitution.

Avoid repeated freeze/thaw cycles.



Immunohistochemical staining of formalin-fixed paraffin-embedded human brain showing membrane staining with anti-MCTP2 antibody at a dilution of 1/100

### Reference:

- (1) Aouizerat, B.E., Vittinghoff, E., Musone, S.L., et al. GWAS for discovery and replication of genetic loci associated with sudden cardiac arrest in patients with coronary artery disease BMC Cardiovasc Disord 11, 29 (2011)

**For Research Use Only**