



S100A6 Antibody

E306992

Product description:

Formulation: Lyophilized S100A6 antibody purified by protein affinity column containing 1% BSA and 0.02% NaN₃

Catalog No.: E306992

Size: 100ug/200ul

Source:

Rabbit polyclonal S100A6⁽¹⁾ antibody was raised against a recombinant human S100A6 protein 1-90aa (BC001431).

Species Reactivity:

Reacts with: Human

Predicted: rat, mus

Not yet tested in other species.

Application:

For research use only

ELISA titer: 1:20,000-1:80,000

Western blot analysis: 1:200-1:1,000

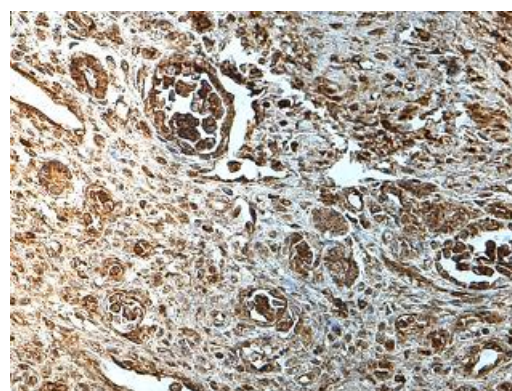
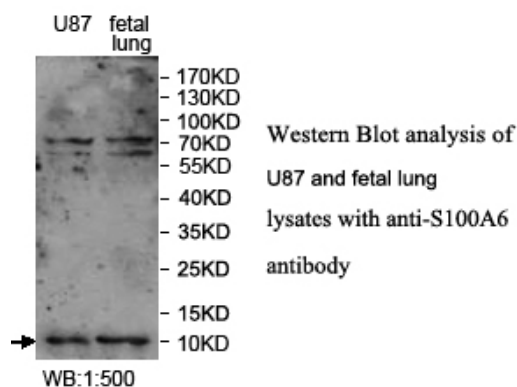
Immunohistochemistry: 1:100-1:500

Optimal dilutions/concentrations should be determined by the end user.

Dilution instruction and storage:

Already reconstituted in 200ul sterile H₂O. The antibody is stable for at least one year when stored at -20°C after reconstitution.

Avoid repeated freeze/thaw cycles.



Immunohistochemical staining of formalin-fixed paraffin-embedded fetal kidney showing cytoplasmic and nucleus staining with anti-S100A6 antibody at a dilution of 1/100

Reference:

(1) Botelho, H.M., Leal, S.S., Cardoso, I., . S100A6 amyloid fibril formation is calcium-modulated and enhances superoxide dismutase-1 (SOD1) aggregation. J. Biol. Chem. 287 (50), 42233-42242 (2012)

For Research Use Only