



## WDR61 Antibody

E307001

**Product description:**

Formulation: Lyophilized WDR61 antibody purified by protein affinity column containing 1% BSA and 0.02% NaN<sub>3</sub>

Catalog No.: E307001

Size: 100ug/200ul

**Source:**

Rabbit polyclonal WDR61<sup>(1)</sup> antibody was raised against a recombinant human WDR61 protein 33-265aa (BC010080).

**Species Reactivity:**

Reacts with: Human

Predicted: rat, mus

Not yet tested in other species.

**Application:**

For research use only

ELISA titer: 1:20,000-1:80,000

Western blot analysis: 1:200-1:1,000

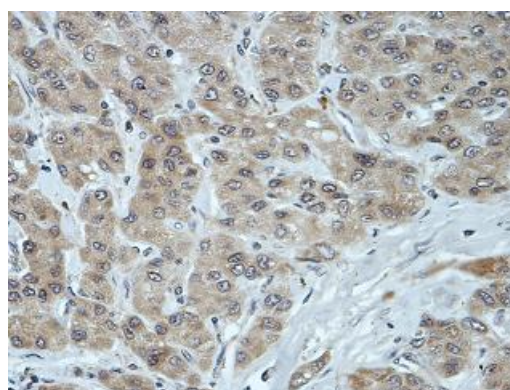
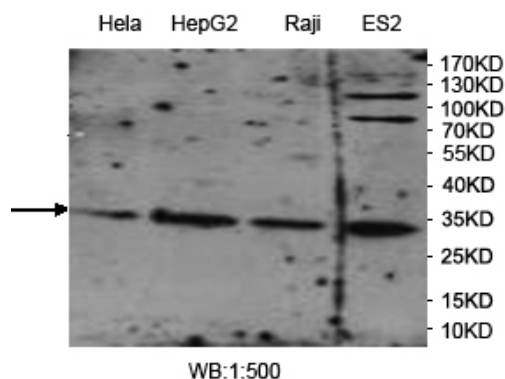
Immunohistochemistry: 1:100-1:500

Optimal dilutions/concentrations should be determined by the end user.

**Dilution instruction and storage:**

Already reconstituted in 200ul sterile H<sub>2</sub>O. The antibody is stable for at least one year when stored at -20°C after reconstitution.

Avoid repeated freeze/thaw cycles.



Immunohistochemical staining of formalin-fixed paraffin-embedded liver cancer showing nucleus and cytoplasm staining with anti-WDR61 antibody at a dilution of 1/100

**Reference:**

(1) Lamesch, P., Li, N., Milstein, S., et al. hORFeome v3.1: a resource of human open reading frames representing over 10,000 human genes. Genomics 89 (3), 307-315 (2007)

**For Research Use Only**