



PPP1CB Antibody

E307027b

Product description:

Formulation: Lyophilized PPP1CB antibody purified by protein affinity column containing 1% BSA and 0.02% NaN₃

Catalog No.: E307027b

Size: 100ug/200ul

Source:

Rabbit polyclonal PPP1CB (1) antibody was raised against a recombinant human PPP1CB protein 189-279aa (BC002697).

Species Reactivity:

Reacts with: Human

Predicted: mus, rat

Not yet tested in other species.

Application:

For research use only

ELISA titer: 1:20,000-1:80,000

Western blot analysis: 1:500-1:1,000

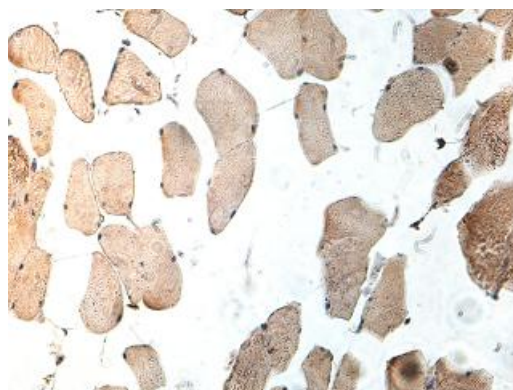
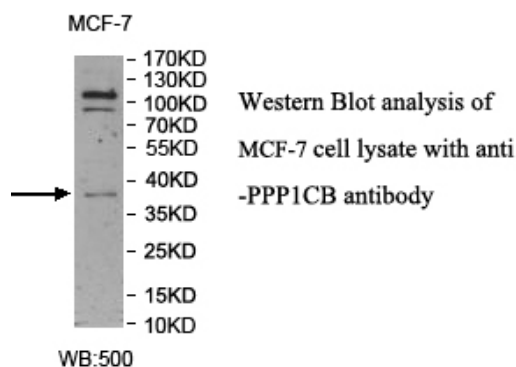
Immunohistochemistry: 1:100-1:500

Optimal dilutions/concentrations should be determined by the end user.

Dilution instruction and storage:

Already reconstituted in 200ul sterile H₂O. The antibody is stable for at least one year when stored at -20°C after reconstitution.

Avoid repeated freeze/defrost cycles.



Immunohistochemical staining of formalin-fixed paraffin-embedded fetal muscle showing cytoplasmic staining with anti-PPP1CB antibody at a dilution of 1/100

Reference:

- (1) Geetha,T., Langlais,P., Caruso,M. and Yi,Z. Protein phosphatase 1 regulatory subunit 12A and catalytic subunit delta, new members in the phosphatidylinositol 3 kinase insulin-signaling pathway. J. Endocrinol. 214 (3), 437-443 (2012)

For Research Use Only