



## ATP6AP1 Antibody

E307120

### Product description:

Formulation: Lyophilized ATP6AP1 antibody purified by protein affinity column containing 1% BSA and 0.02%  $\text{NaN}_3$

Catalog No.: E307120

Size: 100ug/200ul

### Source:

Rabbit polyclonal ATP6AP1<sup>(1)</sup> antibody was raised against a recombinant human ATP6AP1 protein 44-235aa (BC000724).

### Species Reactivity:

Reacts with: Human

Predicted: rat, mus

Not yet tested in other species.

### Application:

For research use only

ELISA titer: 1:20,000-1:80,000

Western blot analysis: 1:200-1:1,000

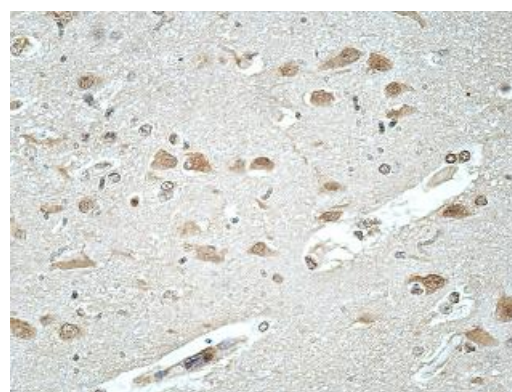
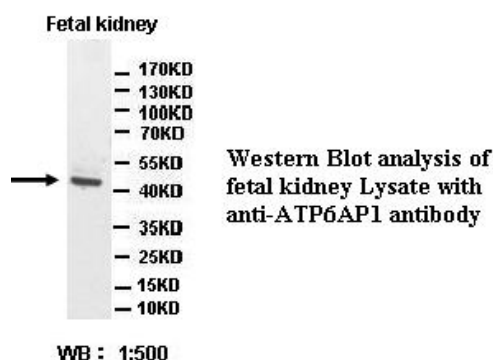
Immunohistochemistry: 1:100-1:500

Optimal dilutions/concentrations should be determined by the end user.

### Dilution instruction and storage:

Already reconstituted in 200ul sterile  $\text{H}_2\text{O}$ . The antibody is stable for at least one year when stored at  $-20^\circ\text{C}$  after reconstitution.

Avoid repeated freeze/thaw cycles.



Immunohistochemical staining of formalin-fixed paraffin-embedded human brain showing membrane staining with anti-ATP6AP1 antibody at a dilution of 1/100

### Reference:

(1) Bailey, S.D., Xie, C., Do, R., et al. Variation at the NFATC2 locus increases the risk of thiazolidinedione-induced edema in the Diabetes Reduction Assessment with ramipril and rosiglitazone Medication (DREAM) study. Diabetes Care 33 (10), 2250-2253 (2010)

**For Research Use Only**