



ATP6V1E2 Antibody

E307126

Product description:

Formulation: Lyophilized ATP6V1E2 antibody purified by protein affinity column containing 1% BSA and 0.02% NaN_3

Catalog No.: E307126

Size: 100ug/200ul

Source:

Rabbit polyclonal ATP6V1E2⁽¹⁾ antibody was raised against a recombinant human ATP6V1E2 protein 2-200aa (BC008981).

Species Reactivity:

Reacts with: Human

Predicted: rat, mus

Not yet tested in other species.

Application:

For research use only

ELISA titer: 1:20,000-1:80,000

Western blot analysis: 1:200-1:1,000

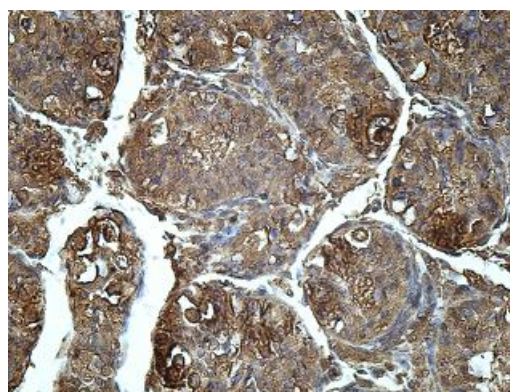
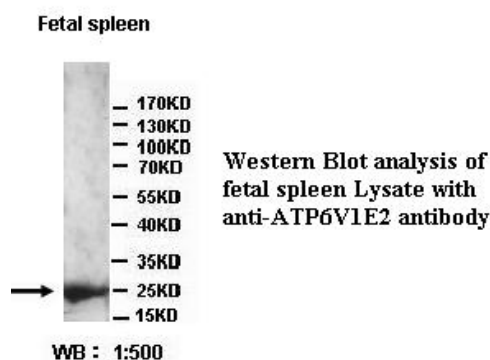
Immunohistochemistry: 1:100-1:500

Optimal dilutions/concentrations should be determined by the end user.

Dilution instruction and storage:

Already reconstituted in 200ul sterile H_2O . The antibody is stable for at least one year when stored at -20°C after reconstitution.

Avoid repeated freeze/thaw cycles.



Immunohistochemical staining of formalin-fixed paraffin-embedded fetal testis showing cytoplasmic staining with anti-ATP6V1E2 antibody at a dilution of 1/100

Reference:

(1) Adachi, K., Oiwa, K., Nishizaka, T., et al. Coupling of rotation and catalysis in F(1)-ATPase revealed by single-molecule imaging and manipulation. *Cell* 130 (2), 309-321 (2007)

For Research Use Only