



PPP6C Antibody

E307151

Product description:

Formulation: Lyophilized PPP6C antibody purified by protein affinity column containing 1% BSA and 0.02% NaN₃

Catalog No.: E307151

Size: 100ug/200ul

Source:

Rabbit polyclonal PPP6C ⁽¹⁾ antibody was raised against a recombinate human PPP6C protein 127-303aa (BC006990).

Species Reactivity:

Reacts with: Human

Predicted: rat, mus

Not yet tested in other species.

Application:

For research use only

ELISA titer: 1:20,000-1:80,000

Western blot analysis: 1:200-1:1,000

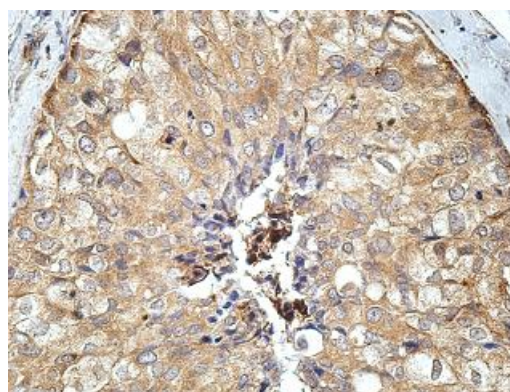
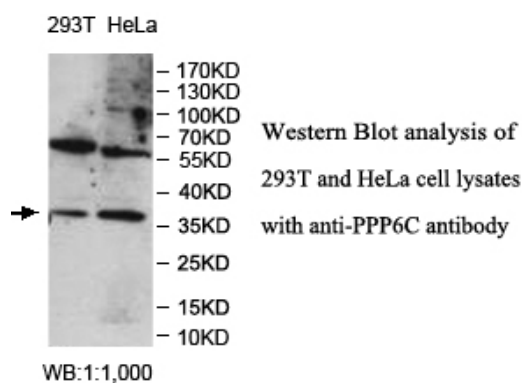
Immunohistochemistry: 1:100-1:500

Optimal dilutions/concentrations should be determined by the end user.

Dilution instruction and storage:

Already reconstituted in 200ul sterile H₂O. The antibody is stable for at least one year when stored at -20°C after reconstitution.

Avoid repeated freeze/thaw cycles.



Immunohistochemical staining of formalin-fixed paraffin-embedded breast carcinoma showing cytoplasmic staining with anti-PPP6C antibody at a dilution of 1/100

Reference:

(1) Dai, M., Zhang, C., Kania, U. et al. A PP6-type phosphatase holoenzyme directly regulates PIN phosphorylation and auxin efflux in rabidopsis. *Plant Cell* 24 (6), 2497-2514 (2012)

For Research Use Only