



## KPNA1 Antibody

**E307288****Product description:**

Formulation: Lyophilized KPNA1 antibody purified by protein affinity column containing 1% BSA and 0.02%  $\text{NaN}_3$

Catalog No.: E307288

Size: 100ug/200ul

**Source:**

Rabbit polyclonal KPNA1<sup>(1)</sup> antibody was raised against a recombinant human KPNA1 protein 293-472aa (BC002374).

**Species Reactivity:**

Reacts with: Human

Predicted: rat, mus

Not yet tested in other species.

**Application:**

For research use only

ELISA titer: 1:20,000-1:80,000

Western blot analysis: 1:200-1:1,000

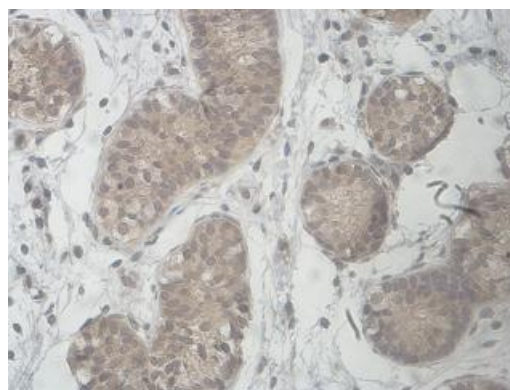
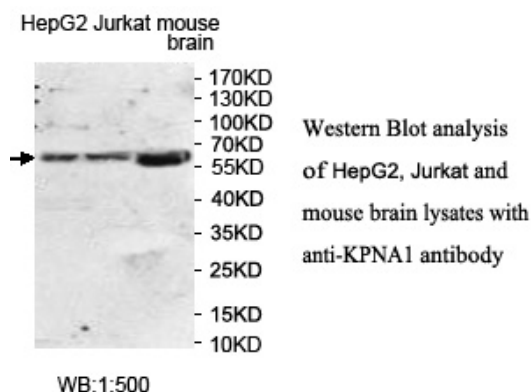
Immunohistochemistry: 1:100-1:500

Optimal dilutions/concentrations should be determined by the end user.

**Dilution instruction and storage:**

Already reconstituted in 200ul sterile  $\text{H}_2\text{O}$ . The antibody is stable for at least one year when stored at  $-20^\circ\text{C}$  after reconstitution.

Avoid repeated freeze/thaw cycles.



**Immunohistochemical staining of formalin-fixed paraffin-embedded fetal testis showing cytoplasm and nucleus staining with anti-KPNA1 antibody at a dilution of 1/100**

**Reference:**

(1) Zhen, Y., Sorensen, V., Skjerpen, C.S., et al. Nuclear import of exogenous FGF1 requires the ER-protein LRRC59 and the importins Kpnalpha1 and Kpnbeta1. Traffic 13 (5), 650-664 (2012)

**For Research Use Only**