



## GINS2 Antibody

**E307355****Product description:**

Formulation: GINS2 antibody purified by protein affinity column containing 1% BSA and 0.02% NaN<sub>3</sub>

Catalog No.: E307355

Size: 100ug/200ul

**Source:**

Rabbit polyclonal GINS2<sup>(1)</sup> antibody was raised against a recombinant human GINS2 protein 9-177aa (BC010164).

**Species Reactivity:**

Reacts with: Human

Predicted: rat, mus

Not yet tested in other species.

**Application:**

For research use only

ELISA titer: 1:20,000-1:80,000

Western blot analysis: 1:200-1:1,000

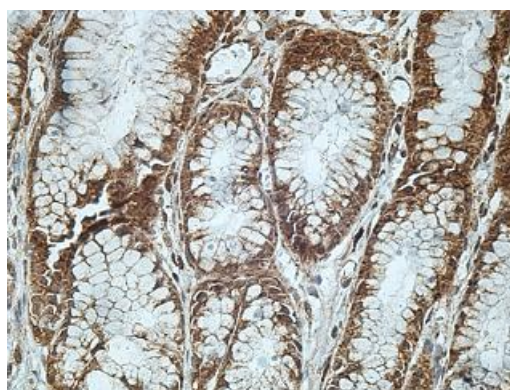
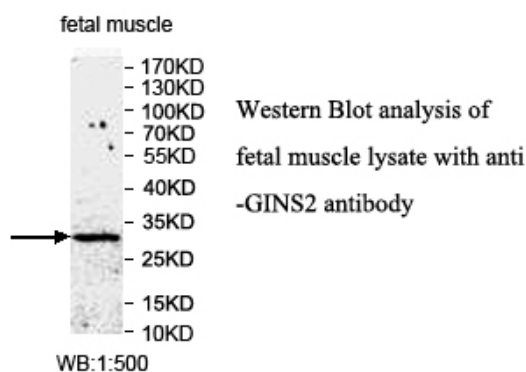
Immunohistochemistry: 1:100-1:500

Optimal dilutions/concentrations should be determined by the end use

**Dilution instruction and storage:**

Already reconstituted in 200ul sterile H<sub>2</sub>O. The antibody is stable for at least one year when stored at -20°C after reconstitution.

Avoid repeated freeze/thaw cycles



Immunohistochemical staining of formalin-fixed paraffin-embedded fetal stomach showing nuclear staining with anti-GINS2 antibody at a dilution of 1/100

**Reference:**

(1) Gao,Y., Wang,S., Liu,B. and Zhong,L. Roles of GINS2 in K562 human chronic myelogenous leukemia and NB4 acute promyelocytic leukemia cells. Int. J. Mol. Med. 31 (6), 1402-1410 (2013)

**For Research Use Only**