



## GMPR2 Antibody

**E307458****Product description:**

Formulation: GMPR2 antibody purified by protein affinity column containing 1% BSA and 0.02% NaN<sub>3</sub>

Catalog No.: E307458

Size: 100ug/200ul

**Source:**

Rabbit polyclonal GMPR2<sup>(1)</sup> antibody was raised against a recombinate human GMPR2 protein 17-182aa (BC008021).

**Species Reactivity:**

Reacts with: Human

Predicted: rat, mus

Not yet tested in other species.

**Application:**

For research use only

ELISA titer: 1:20,000-1:80,000

Western blot analysis: 1:200-1:1,000

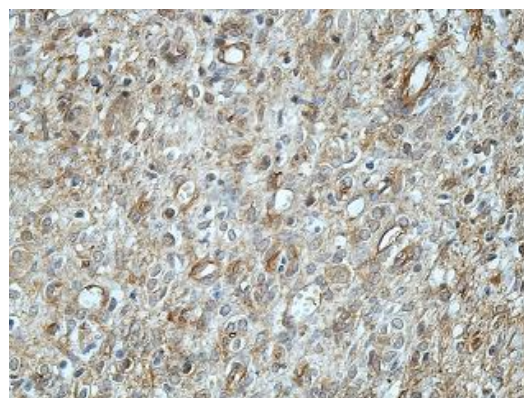
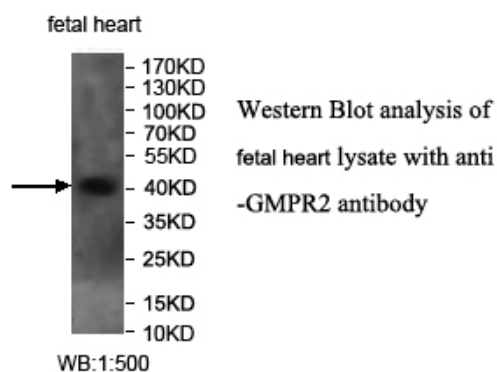
Immunohistochemistry: 1:100-1:500

Optimal dilutions/concentrations should be determined by the end use

**Dilution instruction and storage:**

Already reconstituted in 200ul sterile H<sub>2</sub>O. The antibody is stable for at least one year when stored at -20°C after reconstitution.

Avoid repeated freeze/thaw cycles



Immunohistochemical staining of formalin-fixed paraffin-embedded fetal kidney showing cytoplasmic staining with anti-GMPR2 antibody at a dilution of 1/100

**Reference:**

(1) Baker,B.G., Ball,G.R., Rakha,E.A., et al. Lack of expression of the proteins GMPR2 and PPARalpha are associated with the basal phenotype and patient outcome in breast cancer. Breast Cancer Res. Treat. 137 (1), 127-137 (2013)

**For Research Use Only**