



MRPL38 Antibody

E307470**Product description:**

Formulation: MRPL38 antibody purified by protein affinity column containing 1% BSA and 0.02% NaN₃

Catalog No.: E307470

Size: 100ug/200ul

Source:

Rabbit polyclonal MRPL38⁽¹⁾ antibody was raised against a recombinant human MRPL38 protein 57-289aa (BC013311).

Species Reactivity:

Reacts with: Human

Predicted: mus, rat

Not yet tested in other species.

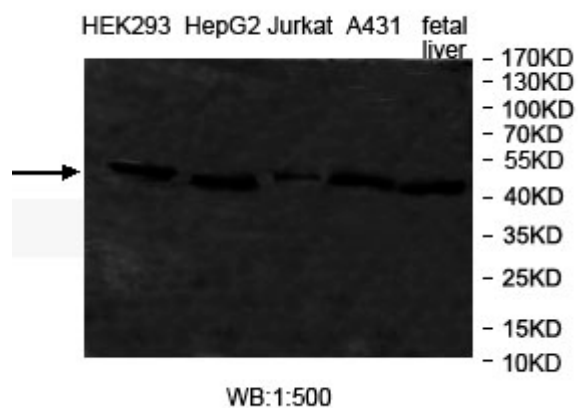
Application:

For research use only

ELISA titer: 1:20,000-1:80,000

Western blot analysis: 1:200-1:1,000

Optimal dilutions/concentrations should be determined by the end use

**Dilution instruction and storage:**

Already reconstituted in 200ul sterile H₂O. The antibody is stable for at least one year when stored at -20°C after reconstitution.

Avoid repeated freeze/thaw cycles

Reference:

(1) Lamesch,P., Li,N., Milstein,S., Fan,C., et al. hORFeome v3.1: a resource of human open reading frames representing over 10,000 human genes. Genomics 89 (3), 307-315 (2007)

For Research Use Only