



## MRPL43 Antibody

**E307489****Product description:**

Formulation: MRPL43 antibody purified by protein affinity column containing 1% BSA and 0.02% NaN<sub>3</sub>

Catalog No.: E307489

Size: 100ug/200ul

**Source:**

Rabbit polyclonal MRPL43 <sup>(1)</sup> antibody was raised against a recombinant human MRPL43 protein 17-139aa (BC041165).

**Species Reactivity:**

Reacts with: Human

Predicted: mus, rat

Not yet tested in other species.

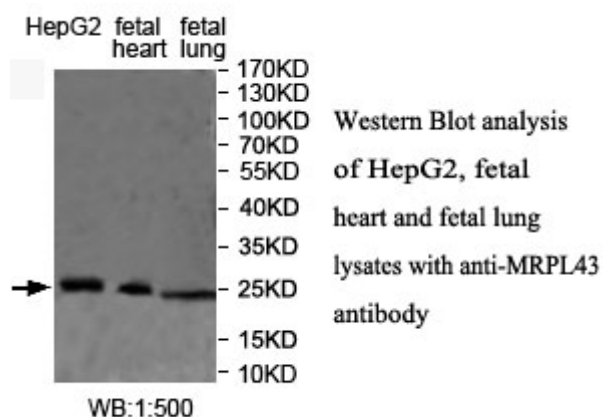
**Application:**

For research use only

ELISA titer: 1:20,000-1:80,000

Western blot analysis: 1:200-1:1,000

Optimal dilutions/concentrations should be determined by the end use

**Dilution instruction and storage:**

Already reconstituted in 200ul sterile H<sub>2</sub>O. The antibody is stable for at least one year when stored at -20°C after reconstitution.

Avoid repeated freeze/thaw cycles.

**Reference:**

(1) Hendrickson, S.L., Lautenberger, J.A., Chinn, L.W., et al. Genetic variants in nuclear-encoded mitochondrial genes influence AIDS progression. PLoS ONE 5 (9), E12862 (2010)

**For Research Use Only**